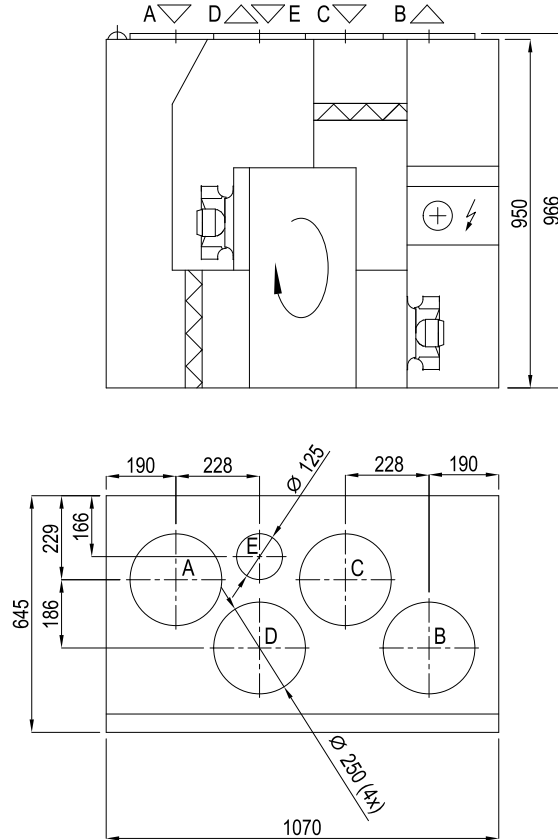


Date: 21-Feb-22

Air handling unit model:

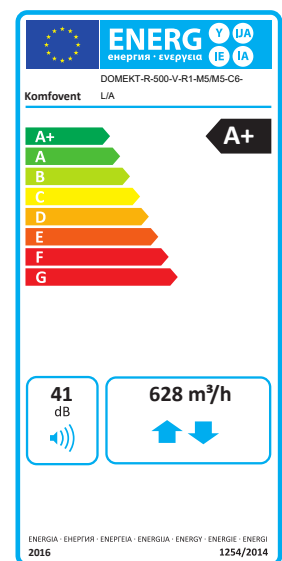
**DOMEKT-R-500-V-R1-M5/M5-C6-L/A**



- A - outdoor intake
- B - supply air
- C - extract indoor
- D - exhaust air
- E - additional extraction connection (by-pass extraction without heat recovery)

**TECHNICAL SPECIFICATION**

Unit category		RVU
Unit type		BVU
Type of HRS		Rotary Heat Exchanger
Panel thickness	[mm]	50
Dimensions b x h x l	[mm]	645 x 950 x 1070
Duct connection	[mm]	4 x 250 1 x 125
Filter dimensions b x h x l	[mm]	540 x 260 x 46
Mass	[kg]	113
Max current	[A]	7.3
Supply voltage	[V]	1~ 230
Color		RAL 9003
Version		Vertical
Inspection side		Right



**DOMEKT-R-500-V-R1-M5/M5-C6-L/A**

Heater		Electric
Motor type		EC motor
Controller		C6
SPI	[W/(m <sup>3</sup> /h)]	0.21

**INPUT DATA**

Supply		
Nominal flow rate	[m <sup>3</sup> /h]	350
Nominal external pressure ( $\Delta P_s$ , ext.)	[Pa]	120
Exhaust		
Nominal flow rate	[m <sup>3</sup> /h]	350
Nominal external pressure ( $\Delta P_s$ , ext.)	[Pa]	120
Climate parameters		
Winter		
Outdoor temperature	[°C]	-5
Outdoor relative humidity	[%]	80
Summer		
Outdoor temperature	[°C]	38
Outdoor relative humidity	[%]	35
Set point temperature		
Winter	[°C]	21

**CALCULATION DATA IN SPECIFIED WORKING POINT**
**Filter data**

	Supply	Exhaust
Filter class(EN ISO 16890)	ePM10 50% (M5)	ePM10 50% (M5)
Pressure drop (clean filter)	[Pa]	15

**Heat exchanger data**

		Winter		Summer	
		Supply	Exhaust	Supply	Exhaust
Actual temp. efficiency	[%]	85.9		85.9	
Humidity efficiency	[%]	52.8		0.0	
Face velocity	[m/s]	1.2	1.2	1.2	1.2
Pressure drop	[Pa]	59	59	59	59
Inlet temperature	[°C]	-5	21	38	26
Inlet rel. humidity	[%]	80	45	35	55
Outlet temperature	[°C]	17.3	-1.3	27.7	36.3
Outlet rel. humidity	[%]	38	95	62	31

**DOMEKT-R-500-V-R1-M5/M5-C6-L/A**
**Energy recovery**

Sensible heat	[kW]	2.6	-1.2
Latent heat	[kW]	0.8	0
Total heat	[kW]	3.4	-1.2
OACF		1.14	1.14

**Electric heater data**

		Winter	
Capacity	[kW]	0.43	
Outlet temperature	[°C]	21	
Outlet rel. humidity	[%]	29.9	
Max power	[kW]	1	

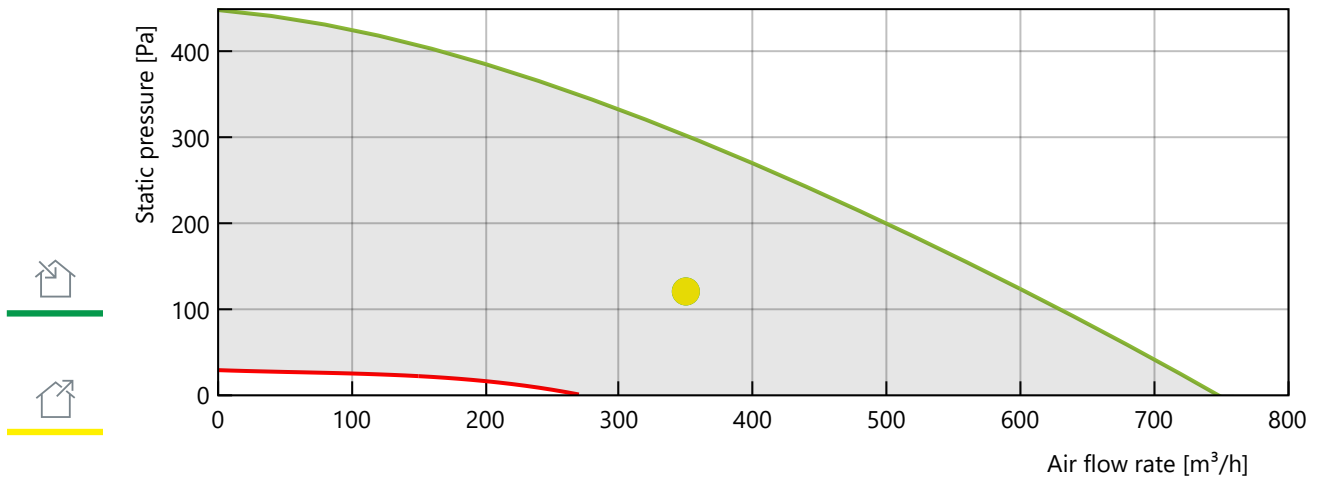
**Fans data**

Input power	[W]	170	
Max current	[A]	1.4	
Nominal voltage	[V]	200..240	
Overall efficiency	[%]	45	
		Supply	Exhaust
Rotating speed	[RPM]	1880	1880
Running current	[A]	0.4	0.4
Static pressure	[Pa]	223	223
Usable power	[W]	49	49
Specific fan power	[kW/(m <sup>3</sup> /s)]	0.51	0.51

**ACOUSTICS DATA**

Frequency	[Hz]	63	125	250	500	1000	2000	4000	8000	dB(A)
Outdoor Lw	[dB]	52	51	53	53	50	46	39	32	55
Supply Lw	[dB]	59	59	61	61	59	53	47	40	63
Extract Lw	[dB]	52	51	53	53	50	46	39	32	55
Exhaust Lw	[dB]	59	59	61	61	59	54	48	41	63
Casing Lw	[dB]	52	50	47	36	33	27	18	13	42
Casing Lp 1 m	[dB]	49	47	43	32	29	23	14	9	38
Casing Lp 3 m	[dB]	44	42	34	24	24	16	8	3	31

DOMEKT-R-500-V-R1-M5/M5-C6-L/A

**PLOT****Instructions**<https://www.komfovent.com/>

Domekt manual version: 21-03

Control manual version: 20-03