



EXPORT PRICE LIST 2023



Aerauliqa S.r.l.

Via Mario Calderara 39-41,
25018 Montichiari, Brescia, Italy

Tel: +39 030 674681

Fax: +39 030 6872149

www.aerauliqa.com

info@aerauliqa.it



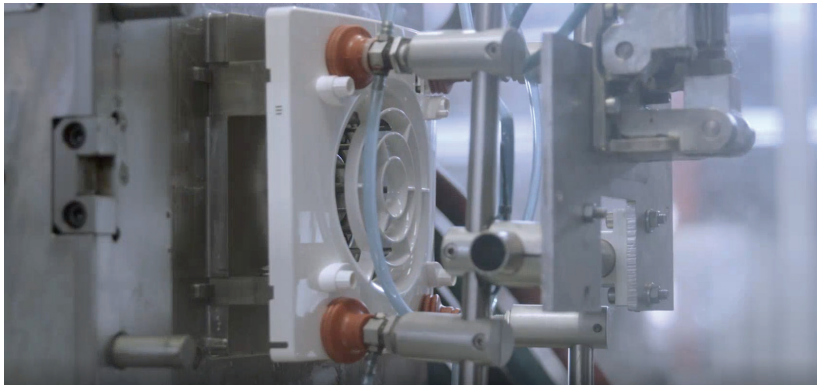
Aerauliqa



Plant A in Montichiari (Brescia - Italy) - Headquarter, production and logistics



Plant B in Ghedi (Brescia - Italy) - Production



Plant C in Mazzano (Brescia - Italy) - Plastic injection

AERAULIQA S.r.l. is an Italian company fully committed to the development, manufacturing and marketing of ventilation units for residential, commercial, industrial and agricultural applications.

Our fan engineering and design capabilities unite form and function. Our products can be integrated and harmonised with any internal surroundings. Indoor Air Quality is at the heart of what we do as this will provide increased health benefits and serenity whilst meeting the strenuous demands of modern life.

Supported by various industry-leading technologies and software, our fan engineers are able to design and manufacture reliable, efficient, high quality units, to overcome the requirements of a continuously evolving market.



A MEMBER OF  ELTA GROUP



For over 20 years we have been a proudly independent, family-owned group, but our foundations were laid over 45 years ago. Our foundations were built on an entrepreneurial spirit and a clear vision of meeting market needs and improving air quality. These have seen us become a leader in high-integrity solutions that move, filter, treat and distribute air, from agriculture to building services to applied technology. We're never standing still, always living and breathing our cause, and looking to the horizon.

Residential Product Index

DECENTRALISED VENTILATION



Quantum NEXT ▶ 12



Quantum HR ▶ 12



Quantum MX ▶ 13



QDMEV ▶ 13



QR100M ▶ 13

DECENTRALISED VENTILATION ACCESSORIES



Accessories ▶ 14

CENTRALISED HRU WITH COUNTERFLOW HEAT EXCHANGER



QR120P-I ▶ 16



QR120P-W ▶ 16



QR180A ▶ 16

QR180M ▶ 17



QR340A ▶ 17



QR280A ▶ 17

QR280M ▶ 18



QR400A ▶ 18



QR550A ▶ 18

CENTRALISED HRU WITH ENTHALPIC HEAT EXCHANGER



QR230E ▶ 19

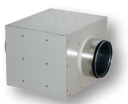


QR280E ▶ 19



QR590E ▶ 19

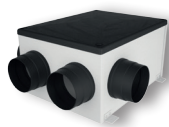
CENTRALISED VENTILATION ACCESSORIES



Accessories ▶ 20

Residential Product Index

CENTRALISED SINGLE FLOW VENTILATION



QCmev ▶ 21

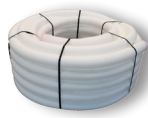


P1 ▶ 21

AIR DISTRIBUTION



External distribution ▶ 22



Internal distribution ▶ 23

DOMESTIC INTERMITTENT VENTILATION



QXD ▶ 30



QX ▶ 30



QUASAR ▶ 31



QD ▶ 31



QS ▶ 32



QA ▶ 33



QB ▶ 34



QIN ▶ 34

DOMESTIC INTERMITTENT VENTILATION ACCESSORIES



Accessories ▶ 35

CONTROLS & SENSORS



Controls & Sensors ▶ 37

Industrial Product Index

AIR CIRCULATORS



AD1400A ▶ 40



AD1400B ▶ 40

DESTRATIFICATION & COMFORT



MHS ▶ 42



WHS ▶ 42



THS ▶ 43



LHS ▶ 43

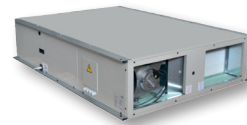
HEAT RECOVERY UNITS



QRD2 ▶ 45



QRD2E ▶ 45



QRCE ▶ 46

WALL AXIAL

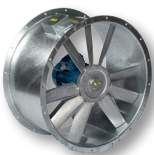


QAP ▶ 51



ASX ▶ 53

DUCTED



LC & SC ▶ 54

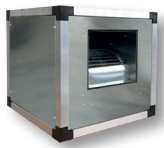
ROOF



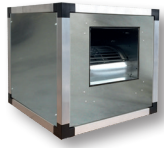
QTC ▶ 55

Industrial Product Index

BOX



QUBIK-S ▶ 58

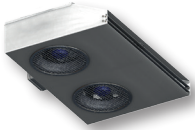


QUBIK-DS ▶ 58



QBX ▶ 60

CARPARK



JDEC ▶ 61

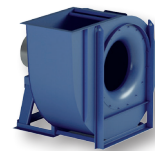
BACKWARD CURVED CENTRIFUGAL



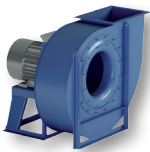
QPRN ▶ 62



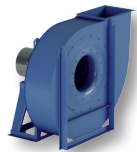
QPRS ▶ 62



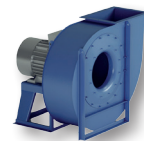
QPRA ▶ 63



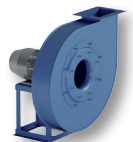
QPRB ▶ 64



QPRC ▶ 65

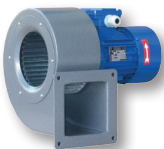


QPRD ▶ 66



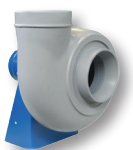
QPRE ▶ 67

FORWARD CURVED CENTRIFUGAL



QUICK ▶ 68

ANTIACID



QPX ▶ 69

SYSTEM



Residential - Decentralised



Residential - Centralised



Wall



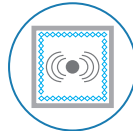
Destratification



HRU



Ducted



Box



Roof



Car Park



Industrial Process



Antiacid

OPERATION



Single flow extract



Single flow intake



Alternate single flow with heat recovery



Dual flow with heat recovery

INSTALLATION



Ceiling



Wall



Ceiling and Wall

Icons

FEATURES



Conformity with
ErP Directive



Low energy
consumption



Top silent



IP protection degree



Product with enthalpic
heat exchanger



EC motor



Modbus Interface



Reversible

CERTIFICATIONS



Certified by
TÜV Rheinland

Residential ventilation



DECENTRALISED VENTILATION

QUANTUM NEXT



Decentralised mechanical ventilation unit with alternate flow and heat recovery, available in 100 and 150 models, ideal for application in single rooms up to 45m², extremely low energy consumption EC brushless motor, multi-speed, IR remote control supplied as standard, integrated humidity control, automatic management of the inversion time to optimise the acoustic and thermal comfort, easy and safe maintenance thanks to a magnet "coupling/uncoupling" system, energy consumption class in temperate climate "A".



DATASHEET

Code	Description	Price €	Box	
			<input type="checkbox"/>	<input type="checkbox"/>
004388	QUANTUM NEXT 100	348,10	1	-
003015	QUANTUM NEXT 150	353,90	1	-
004636	KFNEXT100 - filter kit - 4pcs	7,00	1	-
003918	KFNEXT150 - filter kit - 4pcs	7,00	1	-
005095	TRM-ISO - external hood	65,40	1	-
005822	VERT-COVER NEXT100/150	17,00	1	-

QUANTUM HR



Decentralised mechanical ventilation unit with alternate flow and heat recovery, available in 100 and 150 models, ideal for application in single rooms up to 45m², extremely low energy consumption EC brushless motor, multi-speed, controllable via external switches, energy consumption class in temperate climate "A".



DATASHEET

Code	Description	Price €	Box	
			<input type="checkbox"/>	<input type="checkbox"/>
000468	QUANTUM HR 100	181,00	1	-
000470	QUANTUM HR 150	211,50	1	-
001080	KF100HR - filter kit - 3pcs	4,60	1	-
001081	KF150HR - filter kit - 3pcs	5,80	1	-
005095	TRM-ISO - external hood	65,40	1	-
005823	KT-DEFL-100 - for vertical discharge - 2pcs	7,30	1	-
005824	KT-DEFL-150 - for vertical discharge - 2pcs	9,70	1	-
000597	CTRL-S-P - surface	18,70	1	-
000596	CTRL-S-I - built-in	18,70	1	-

QUANTUM MX



DATASHEET

Decentralised mechanical extract ventilation unit, Ø100mm, for continuous running at constant flow, ideal for air exchange in small to medium sized rooms up to 67m² through medium length ducting, low energy consumption EC brushless motor, multi-speed, integrated LCD display, smart humidity control and timer, easily removable design front cover.

Code	Description	Price €	Box	
			<input type="checkbox"/>	<input type="checkbox"/>
004635	QUANTUM MX 100 - humidity control/timer	123,90	1	8
003684	EG100 - external fixed grille	4,60	1	48
000455	TELESCOPIC DUCT Ø100mm L=300-570mm	8,60	1	18
004641	WKG100MX - window kit	15,10	1	12

QDMEV



DATASHEET

Decentralised mechanical extract ventilation unit, Ø100mm, for continuous running at constant flow, ideal for air exchange in small to medium sized rooms up to 67m² through medium length ducting, low energy consumption EC brushless motor, multi-speed, smart humidity control and timer, easily removable design front cover.

Code	Description	Price €	Box	
			<input type="checkbox"/>	<input type="checkbox"/>
005851	QDMEV 100 - humidity control/timer	105,00	1	8
003684	EG100 - external fixed grille	4,60	1	48
000455	TELESCOPIC DUCT Ø100mm L=300-570mm	8,60	1	18
003689	CG100 - ceiling gasket	4,60	1	-

QR100M



DATASHEET

Double flow decentralised mechanical ventilation unit with heat recovery, ideal for application in single rooms up to 75m², no air distribution network needed, high efficiency EC brushless motors, counter-flow cross-flow heat exchanger, ISO Coarse 60% (G4) filters supplied, ISO ePM1 60% (F7) filter on request, energy consumption class in temperate climate "A".

Code	Description	Price €	Box	
			<input type="checkbox"/>	<input type="checkbox"/>
003695	QR100M	1.164,70	1	-
003684	EG100 - external fixed grille	4,60	1	48
000455	TELESCOPIC DUCT Ø100mm L=300-570mm	8,60	1	18
003700	KF100G4 - filter kit - 2pcs	30,30	1	-
003701	KF100F7 - filter - 1pc	46,80	1	-

DECENTRALISED VENTILATION ACCESSORIES



KT-DECOR

Kit consisting of a metal sheet front cover with modern and minimalist design and a frame with magnets to be fixed to the frontal support of the fan unit, the decor cover is available in different colours and with luxury coatings, available for Quantum NEXT, Quantum HR, Quantum MX, QDMEV units.

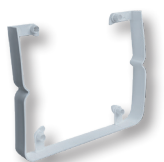
Code	Description	Price €	Box	
			<input type="checkbox"/>	<input type="checkbox"/>
005061	KT-DECOR 100 EMBOSSED WHITE RAL 9003	29,20	1	-
005062	KT-DECOR 100 SILVER RAL 9007 GLITTER	29,20	1	-
005063	KT-DECOR 100 EMBOSSED BLACK	29,20	1	-
005064	KT-DECOR 100 GOLD VAN GOGH	29,20	1	-
005065	KT-DECOR 100 CORTEN EFFECT	29,20	1	-
005066	KT-DECOR 150 EMBOSSED WHITE RAL 9003	32,70	1	-
005067	KT-DECOR 150 SILVER RAL 9007 GLITTER	32,70	1	-
005068	KT-DECOR 150 EMBOSSED BLACK	32,70	1	-
005069	KT-DECOR 150 GOLD VAN GOGH	32,70	1	-
005070	KT-DECOR 150 CORTEN EFFECT	32,70	1	-



VERT-COVER NEXT

Vertical discharge front cover made from high quality ABS, RAL9010, provided with manual closing flap, available for Quantum NEXT 100 and 150.

Code	Description	Price €	Box	
			<input type="checkbox"/>	<input type="checkbox"/>
005822	VERT-COVER NEXT100/150	17,00	1	-



KT-DEFL

Airflow deflector for vertical discharge made from ABS, RAL9010, available for Quantum HR.

Code	Description	Price €	Box	
			<input type="checkbox"/>	<input type="checkbox"/>
005823	KT-DEFL-100 - 2pcs	7,30	1	-
005824	KT-DEFL-150 - 2pcs	9,70	1	-



KT

Closure plug kit for Quantum HR, Quantum NEXT and BCRG, delivered with supporting frame.

Code	Description	Price €	Box	
			<input type="checkbox"/>	<input type="checkbox"/>
001548	KT100HR - 2pcs	4,60	1	-
001549	KT150HR - 2pcs	4,60	1	-



WKG MX

Window kit with external fixed grille for Quantum MX.

Code	Description	Price €	Box	
			<input type="checkbox"/>	<input type="checkbox"/>
004641	WKG100MX	15,10	1	12



TRM-ISO

External terminal with top sound attenuation performance (sound reduction index D_{new} 45dB), designed to attenuate the noise coming from outside and ideal in case of particularly windy conditions, made of aluminium sheet pre-painted RAL9010, provided with soundproof lining, front inspection panel, drip-breaker and removable grid with anti-insect net, can also be installed semi-recessed (suitable for model 100 and 150).

Code	Description	Price €	Box	
			<input type="checkbox"/>	<input type="checkbox"/>
005095	TRM-ISO	65,40	1	-



TRM-PRO

External terminal acoustically insulated (sound reduction index D_{new} 36dB), designed to attenuate the noise coming from outside and ideal in case of particularly windy conditions, made of aluminium sheet pre-painted RAL9010, provided with soundproof lining, drip-breaker and removable grid with anti-insect net (suitable for model 100 and 150).

Code	Description	Price €	Box	
			<input type="checkbox"/>	<input type="checkbox"/>
000972	TRM-PRO	57,20	1	

CENTRALISED HRU WITH COUNTERFLOW HEAT EXCHANGER

QR120P-I



DATASHEET

Double flow centralised mechanical ventilation unit with heat recovery, suitable for horizontal installation at ceiling or false ceiling (190mm thickness), and wall vertical installation, for ambient up to 67m², high efficiency EC brushless motors, Ø100mm spigots, easy removable ISO Coarse 60% (G4) filters, ISO ePM1 60% (F7) filter on request, remote multifunctional touch controller with led indicators included (CTRL-V1), Modbus interface, supplied pre-wired for a simplified electrical connection, energy consumption class in temperate climate "A".

Code	Description	Price €	Box	
			<input type="checkbox"/>	<input type="checkbox"/>
004922	QR120P-I	1.038,40	1	-
005253	KF120G4 - filter kit - 2pcs	32,70	1	-
005255	KF120F7 - filter - 1pc	45,60	1	-

QR120P-W



DATASHEET

Double flow centralised mechanical ventilation unit with heat recovery, suitable for wall vertical installation, for ambient up to 75m², high efficiency EC brushless motors, Ø100mm spigots, easy removable ISO Coarse 60% (G4) filters, ISO ePM1 60% (F7) filter on request, remote multifunctional touch controller with led indicators included (CTRL-V1), Modbus interface, supplied pre-wired for a simplified electrical connection, energy consumption class in temperate climate "A".

Code	Description	Price €	Box	
			<input type="checkbox"/>	<input type="checkbox"/>
004923	QR120P-W	1.038,40	1	-
005253	KF120G4 - filter kit - 2pcs	32,70	1	-
005255	KF120F7 - filter - 1pc	45,60	1	-

QR180A



DATASHEET

Double flow centralised mechanical ventilation unit with heat recovery, suitable for ceiling or false-ceiling installation, for horizontal mounting (only 269mm height), for ambient up to 130m², high efficiency EC brushless motors, automatic integrated bypass, Ø125mm spigots, ISO Coarse 60% (G4) filters, ISO ePM1 60% (F7) filter on request, control panel with LCD display included, Modbus interface, supplied pre-wired for a simplified electrical connection, energy consumption class in temperate climate "A".

Code	Description	Price €	Box	
			<input type="checkbox"/>	<input type="checkbox"/>
001266	QR180A	1.551,20	1	-
003699	KF180G4 - filter kit - 2pcs	29,20	1	-
001809	KF180F7 - filter - 1pc	49,00	1	-

QR180M



Double flow centralised mechanical ventilation unit with heat recovery, suitable for ceiling or false-ceiling installation, for horizontal mounting (only 269mm height), for ambient up to 130m², high efficiency EC brushless motors, integrated bypass with manual activation, Ø125mm spigots, ISO Coarse 60% (G4) filters, ISO ePM1 60% (F7) filter on request, supplied pre-wired for a simplified electrical connection, energy consumption class in temperate climate "A".



DATASHEET

Code	Description	Price €	Box	
			<input type="checkbox"/>	<input type="checkbox"/>
004130	QR180M	1.408,80	1	-
003699	KF180G4 - filter kit - 2pcs	29,20	1	-
001809	KF180F7 - filter - 1pc	49,00	1	-

QR340A



Double flow centralised mechanical ventilation unit with heat recovery, suitable for ceiling or false-ceiling installation, for horizontal mounting (only 315mm height), for ambient up to 220m², high efficiency EC brushless motors, automatic integrated bypass, Ø148-155mm spigots, ISO Coarse 60% (G4) filters, ISO ePM1 60% (F7) filter on request, control panel with LCD display included, Modbus interface, supplied pre-wired for a simplified electrical connection, energy consumption class in temperate climate "A".



DATASHEET

Code	Description	Price €	Box	
			<input type="checkbox"/>	<input type="checkbox"/>
005292	QR340A	1.707,30	1	-
005561	KF340G4 - filter kit - 2pcs	29,20	1	-
005562	KF340F7 - filter kit - 1pc	49,00	1	-

QR280A



Double flow centralised mechanical ventilation unit with heat recovery, suitable for vertical installation, possible installation in limited spaces thanks to its compact dimensions, for ambient up to 190m², high efficiency EC brushless motors, automatic integrated bypass, Ø125mm spigots, ISO Coarse 60% (G4) filters, ISO ePM1 55% (F7) filter on request, control panel with LCD display included, Modbus interface, supplied pre-wired for a simplified electrical connection, energy consumption class in temperate climate "A".



DATASHEET

Code	Description	Price €	Box	
			<input type="checkbox"/>	<input type="checkbox"/>
003217	QR280A	1.640,10	1	-
001676	KF280G4 - filter kit - 2pcs	29,20	1	-
001810	KF280F7 - filter - 1pc	49,00	1	-

QR280M								
---------------	--	--	--	--	--	--	--	--



DATASHEET

Double flow centralised mechanical ventilation unit with heat recovery, suitable for vertical installation, possible installation in limited spaces thanks to its compact dimensions, for ambient up to 190m², high efficiency EC brushless motors, integrated bypass with manual activation, Ø125mm spigots, ISO Coarse 60% (G4) filters, ISO ePM1 55% (F7) filter on request, supplied pre-wired for a simplified electrical connection, energy consumption class in temperate climate "A".

Code	Description	Price €	Box	
			<input type="checkbox"/>	<input type="checkbox"/>
004131	QR280M	1.442,70	1	-
001676	KF280G4 - filter kit - 2pcs	29,20	1	-
001810	KF280F7 - filter - 1pc	49,00	1	-

QR400A								
---------------	---	---	---	---	---	--	--	--



DATASHEET

Double flow centralised mechanical ventilation unit with heat recovery, suitable for vertical installation, for ambient up to 270m², high efficiency EC brushless motors, automatic integrated bypass, Ø148-155mm spigots, ISO Coarse 60% (G4) filters, ISO ePM1 60% (F7) filter on request, control panel with LCD display included, Modbus interface, supplied pre-wired for a simplified electrical connection, energy consumption class in temperate climate "A+".

Code	Description	Price €	Box	
			<input type="checkbox"/>	<input type="checkbox"/>
003696	QR400A	2.194,90	1	-
003697	KF400G4 - filter kit - 2pcs	26,90	1	-
003698	KF400F7 - filter - 1pc	42,00	1	-

QR550A								
---------------	---	---	---	---	---	--	--	--



DATASHEET

Double flow centralised mechanical ventilation unit with heat recovery, suitable for vertical installation, for ambient up to 385m², high efficiency EC brushless motors, automatic integrated bypass, Ø148-155mm spigots, ISO Coarse 60% (G4) filters, ISO ePM1 60% (F7) filter on request, control panel with LCD display included, Modbus interface, supplied pre-wired for a simplified electrical connection, energy consumption class in temperate climate "A".

Code	Description	Price €	Box	
			<input type="checkbox"/>	<input type="checkbox"/>
001016	QR550A	2.289,50	1	-
003697	KF400G4 - filter kit - 2pcs	26,90	1	-
003698	KF400F7 - filter - 1pc	42,00	1	-

CENTRALISED HRU WITH ENTHALPIC HEAT EXCHANGER

QR230E



DATASHEET

Double flow centralised mechanical ventilation unit with heat recovery equipped with enthalpic heat exchanger that does not require any condensation drainage, suitable for ceiling or false-ceiling installation for horizontal mounting (only 269mm height), for ambient up to 150m², high efficiency EC brushless motors, automatic integrated bypass, Ø125mm spigots, ISO Coarse 60% (G4) filters, ISO ePM1 60% (F7) filter on request, control panel with LCD display included, Modbus interface, supplied pre-wired for a simplified electrical connection, energy consumption class in temperate climate "A".

Code	Description	Price €	Box	
			<input type="checkbox"/>	<input type="checkbox"/>
001411	QR230E	1.857,30	1	-
003699	KF180G4 - filter kit - 2pcs	29,20	1	-
001809	KF180F7 - filter - 1pc	49,00	1	-

QR280E



DATASHEET

Double flow centralised mechanical ventilation unit with heat recovery equipped with enthalpic heat exchanger that does not require any condensation drainage, suitable for vertical installation, for ambient up to 190m², possible installation in limited spaces thanks to its compact dimensions, high efficiency EC brushless motors, automatic integrated bypass, Ø125mm spigots, ISO Coarse 60% (G4) filters, ISO ePM1 55% (F7) filter on request, control panel with LCD display included, Modbus interface, supplied pre-wired for a simplified electrical connection, energy consumption class in temperate climate "A".

Code	Description	Price €	Box	
			<input type="checkbox"/>	<input type="checkbox"/>
004341	QR280E	2.212,40	1	-
001676	KF280G4 - filter kit - 2pcs	29,20	1	-
001810	KF280F7 - filter - 1pc	49,00	1	-

QR590E

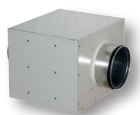


DATASHEET

Double flow centralised mechanical ventilation unit with heat recovery equipped with enthalpic heat exchanger that does not require any condensation drainage, suitable for vertical installation, for ambient up to 415m², high efficiency EC brushless motors, automatic integrated bypass, Ø148-155mm spigots, ISO Coarse 60% (G4) filters, ISO ePM1 60% (F7) filter on request, control panel with LCD display included, Modbus interface, supplied pre-wired for a simplified electrical connection, energy consumption class in temperate climate "A".

Code	Description	Price €	Box	
			<input type="checkbox"/>	<input type="checkbox"/>
001413	QR590E	2.983,40	1	-
003697	KF400G4 - filter kit - 2pcs	26,90	1	-
003698	KF400F7 - filter - 1pc	42,00	1	-

CENTRALISED VENTILATION ACCESSORIES



WATER COIL AC/AF

Heating/cooling 3-row water coil with self-supporting structure in white pre-painted sheet metal and insulation in expanded polyethylene.

Code	Description	Price €	Box	
			<input type="checkbox"/>	<input type="checkbox"/>
000052	WATER COIL AC/AF 150m³/h Ø125mm 1,1kW	523,90	1	-
000053	WATER COIL AC/AF 350m³/h Ø160mm 2,2kW	616,60	1	-
000054	WATER COIL AC/AF 500m³/h Ø200mm 3,1kW	690,70	1	-



ELECTRIC HEATER

Armored electric heater with galvanised casing, complete with adjustable bulb (-30°C ÷ +30°C) to set the activation temperature and with thermal protection.

Code	Description	Price €	Box	
			<input type="checkbox"/>	<input type="checkbox"/>
000055	ELECTRIC HEATER 230-M 150m³/h Ø125mm 500W	531,30	1	-
000056	ELECTRIC HEATER 230-M 350m³/h Ø160mm 1000W	599,20	1	-
000057	ELECTRIC HEATER 230-M 500m³/h Ø200mm 1500W	618,90	1	-



CSF200F7

External box complete with F7 filter, made of RAL9010 pre-painted galvanized sheet metal, Ø125mm spigot, suitable for QR180A, QR180M, QR230E, QR280A, QR280M, QR280E.

Code	Description	Price €	Box	
			<input type="checkbox"/>	<input type="checkbox"/>
000411	CSF200F7	120,30	1	-

CENTRALISED SINGLE FLOW VENTILATION

QCMEV



DATASHEET

Single flow centralised mechanical extract ventilation unit, suitable for ceiling, false-ceiling or floor installation, for horizontal or vertical mounting, high efficiency EC brushless motor, Ø125mm outlet to exhaust air to the outside, 4xØ125mm inlets to draw stale air out from inside, internal acoustic foam lining, energy consumption class in temperate climate "B".

QCmev 125HYP: supplied with continuous remote monitoring system through CTRL-V3.

Code	Description	Price €	Box	
			<input type="checkbox"/>	<input type="checkbox"/>
003681	QCMEV 125	297,90	1	-
001514	QCMEV 125HY - with humidity control	307,20	1	-
005481	QCMEV 125HYP - with humidity control	394,80	1	-

P1



DATASHEET

Loft mounted whole-house Positive Input Ventilation unit (PIV), suitable for floor or ceiling installation, in any position, EC motor for energy saving, adjustable 2-speed operation, high speed override via remote switch or ambient sensor, internal acoustic foam lining, washable anti-dust pre-filter, ISO Coarse 60% (G4) filter supplied, IAQ filter on request, ABS design ceiling diffuser, 2,5m length flexible ducting (insulated duct on request), energy consumption class in temperature climate "C".

P1-H: supplied with integral heating element (500W), remote selection of the speed and heating element via dedicated CTRL-P1 controller (accessory on request), automatic "heat recovery" and "stand-by" modes, ModBus interface.

Code	Description	Price €	Box	
			<input type="checkbox"/>	<input type="checkbox"/>
004582	P1-N	363,30	1	-
004570	P1-H	581,70	1	-
004596	IAQ FILTER - 1pc	73,50	1	-
004655	KPF P1 - pre-filter - 1pc	14,00	1	-
003697	KF400G4 - filter kit - 2pcs	26,90	1	-
004643	CTRL-P1-P - surface	24,50	1	-
004644	CTRL-P1-I - built-in	24,50	1	-
004645	FLEX ISO INSULATED Ø127mm - 2,5m	51,80	1	-

EXTERNAL AIR DISTRIBUTION



FLEX ISO

Flexible duct made of an aluminum/polyester/micro-perforated aluminum wall to reduce air passage noise and of a harmonic steel wire spiral, thermal insulation coating in polyester fiber (thickness 25mm), external protection in aluminized polyolefin film, 10m length.

Code	Description	Price €	Box	
			<input type="checkbox"/>	<input type="checkbox"/>
000172	FLEX ISO INSULATED Ø102mm	140,00	1	-
000173	FLEX ISO INSULATED Ø127mm	143,30	1	-
000174	FLEX ISO INSULATED Ø160mm	165,60	1	-



KAM

Through-wall kit with external hood in galvanized metal sheet, finished RAL9010, with acoustic lining and telescopic pipe of 300-570mm length.

Code	Description	Price €	Box	
			<input type="checkbox"/>	<input type="checkbox"/>
000513	KAM 125	61,90	1	-
000538	KAM 150	67,70	1	-



TELESCOPIC DUCT

Telescopic pipe made from 100% recycled black ABS or white PVC, adaptable to the wall thickness.

Code	Description	Price €	Box	
			<input type="checkbox"/>	<input type="checkbox"/>
000455	TELESCOPIC DUCT Ø100mm L=300-570mm - black	8,60	1	18
000571	TELESCOPIC DUCT Ø125mm L=300-570mm - white	9,60	1	12
000456	TELESCOPIC DUCT Ø150mm L=300-570mm - black	11,10	1	8



EG

External fixed grille made of high quality ABS, shockproof and UV resistant, RAL9010.

Code	Description	Price €	Box	
			<input type="checkbox"/>	<input type="checkbox"/>
003684	EG100	4,60	1	48
003685	EG120	4,60	1	32
003686	EG150	5,80	1	32



TEINX

External stainless steel bull nose vent with wire mesh.

Code	Description	Price €	Box	
			<input type="checkbox"/>	<input type="checkbox"/>
000630	TEINX 100	10,50	1	-
000631	TEINX 125	12,90	1	-
000632	TEINX 150	15,10	1	-

INTERNAL AIR DISTRIBUTION



PLMP 125 4x75

Distribution plenum in galvanized steel, 1 inlet Ø125mm, 4 rear outlets Ø80mm and 5 plugs (for CNDFLB 75/63). Air volume setting through TUNE80 SILENT (on request).

Code	Description	Price €	Box	
			<input type="checkbox"/>	<input type="checkbox"/>
003750	PLMP 125 4X75	82,90	1	-



PLMP 125 6x75

Distribution plenum in galvanized steel, 1 inlet Ø125mm, 6 rear outlets Ø80mm and 7 plugs (for CNDFLB 75/63). Air volume setting through TUNE80 SILENT (on request).

Code	Description	Price €	Box	
			<input type="checkbox"/>	<input type="checkbox"/>
000002	PLMP 125 6X75	135,50	1	-



PLMP 125 10X75

Distribution plenum in galvanized steel, 1 inlet Ø125mm, 10 rear outlets Ø80mm and 11 plugs (for CNDFLB 75/63). Air volume setting through TUNE80 SILENT (on request).

Code	Description	Price €	Box	
			<input type="checkbox"/>	<input type="checkbox"/>
001406	PLMP 125 10X75	142,60	1	-



PLMP 150 10X75

Distribution plenum in galvanized steel, 1 inlet Ø150mm, 10 rear outlets Ø80mm and 11 plugs (for CNDFLB 75/63). Air volume setting through TUNE80 SILENT (on request).

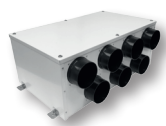
Code	Description	Price €	Box	
			<input type="checkbox"/>	<input type="checkbox"/>
000003	PLMP 150 10X75	144,80	1	-



PLMP 150 15X75

Distribution plenum in galvanized steel, 1 inlet Ø150mm, 15 rear outlets Ø80mm and 16 plugs (for CNDFLB 75/63). Air volume setting through TUNE80 SILENT (on request).

Code	Description	Price €	Box	
			<input type="checkbox"/>	<input type="checkbox"/>
000004	PLMP 150 15X75	168,20	1	-



PLMP 125 7X90

Distribution plenum in galvanized steel, 1 inlet Ø125mm, 7 rear outlets Ø100mm and 8 plugs (for CNDFLB 90/75).

Code	Description	Price €	Box	
			<input type="checkbox"/>	<input type="checkbox"/>
001480	PLMP 125 7X90	127,30	1	-



PLMP 150 11X90

Distribution plenum in galvanized steel, 1 inlet Ø150mm, 11 rear outlets Ø100mm and 12 plugs (for CNDFLB 90/75).

Code	Description	Price €	Box	
			<input type="checkbox"/>	<input type="checkbox"/>
001546	PLMP 150 11X90	142,60	1	-



PLMP 150 2x125

Distribution plenum in galvanized steel, 1 inlet Ø150mm, 2 rear outlets Ø125mm and 3 plugs.

Code	Description	Price €	Box	
			<input type="checkbox"/>	<input type="checkbox"/>
000575	PLMP 150 2X125	71,30	1	-



PLML 150 2x125

Distribution plenum in galvanized steel, 1 inlet Ø150mm, 2 side outlets Ø125mm and 3 plugs.

Code	Description	Price €	Box	
			<input type="checkbox"/>	<input type="checkbox"/>
000580	PLML 150 2X125	64,30	1	-



CNDFLB

Semi-rigid antimicrobial, antibacterial and antistatic duct, realised in twin wall from high-density polyethylene, smooth internal side, corrugated outer casing, supplied with sealing dust caps, appropriate for installation in concrete slab, false ceiling or on the wall, 50m length.

Code	Description	Price €	Box	
			<input type="checkbox"/>	<input type="checkbox"/>
001536	CNDFLB 75/63	217,00	1	-
001541	CNDFLB 90/75	298,40	1	-



KORB

Set of sealing rings for CNDFLB duct.

Code	Description	Price €	Box	
			<input type="checkbox"/>	<input type="checkbox"/>
000060	KORB 75 - O-RING Ø80mm - 10pcs	14,00	1	-
001545	KORB 90 - O-RING Ø100mm - 10pcs	14,00	1	-



KGNFLB

Connection joint for CNDFLB ducts, sealing rings included.

Code	Description	Price €	Box	
			<input type="checkbox"/>	<input type="checkbox"/>
001537	KGNFLB 75/63	9,10	1	-
001542	KGNFLB 90/75	10,40	1	-



KCRVFLB

90° vertical bend for CNDFLB 75/63 duct, sealing rings included.

Code	Description	Price €	Box	
			<input type="checkbox"/>	<input type="checkbox"/>
001538	KCRVFLB 75/63	16,70	1	-



KCLFLB

Handy fixing system to ease the CNDFLB duct positioning at the construction site, they are available in two colours (red and blue) to distinguish the airflow direction.

Code	Description	Price €	Box	
			<input type="checkbox"/>	<input type="checkbox"/>
003751	KCLFLB 75/63 BLUE - 12pcs	15,60	1	-
003752	KCLFLB 75/63 RED - 12pcs	15,60	1	-
003753	KCLFLB 90/75 BLUE - 12pcs	18,00	1	-
003754	KCLFLB 90/75 RED - 12pcs	18,00	1	-



KTAP

Set of plastic plugs for plenum outlets.

Code	Description	Price €	Box	
			<input type="checkbox"/>	<input type="checkbox"/>
003679	KTAP 75 - Ø80mm - 3pcs	3,50	1	-
001623	KTAP 90 - Ø100mm - 3pcs	3,50	1	-
003636	KTAP 125 - Ø125mm - 3pcs	3,50	1	-



TUNE80 SILENT

Soft control damper to set the air volume, designed to be joint to the Ø80mm spigots of air exhaust/supply plenums or distribution plenums, made of polypropylene, fitted with a quick coupling system and with a shaped wing profile to ensure maximum acoustic comfort.

Code	Description	Price €	Box	
			<input type="checkbox"/>	<input type="checkbox"/>
005168	TUNE80 SILENT - 3pcs	5,80	1	-



GRLFT

Architectural rectangular perforated grille (round holes) in galvanised steel, finished RAL9010, with magnets.

Code	Description	Price €	Box	
			<input type="checkbox"/>	<input type="checkbox"/>
003728	GRLFT 200X100	32,70	1	14
003729	GRLFT 300X100	33,90	1	14



GRLFQ

Architectural rectangular perforated grille (square holes) in galvanised steel, finished RAL9010, with magnets.

Code	Description	Price €	Box	
			<input type="checkbox"/>	<input type="checkbox"/>
003730	GRLFQ 200X100	33,90	1	14
003731	GRLFQ 300X100	33,90	1	14



GRLFT - METAL

Architectural rectangular perforated grille (round holes) in galvanised steel, metal finishing, with magnets.

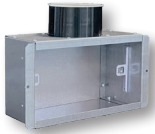
Code	Description	Price €	Box	
			<input type="checkbox"/>	<input type="checkbox"/>
003732	GRLFT 200X100 METAL	32,70	1	14
003733	GRLFT 300X100 METAL	33,90	1	14



GRLFQ - METAL

Architectural rectangular perforated grille (square holes) in galvanised steel, metal finishing, with magnets.

Code	Description	Price €	Box	
			<input type="checkbox"/>	<input type="checkbox"/>
003734	GRLFQ 200X100 METAL	33,90	1	14
003735	GRLFQ 300X100 METAL	33,90	1	14



PLML 200X100 1X75

Plenum for air exhaust/supply in galvanised steel, 1 long side outlet Ø80mm, with anti-mortar protection and 1 plug (for CNDFLB 75/63). Air volume setting through TUNE80 SILENT (on request).

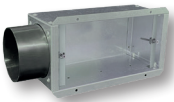
Code	Description	Price €	Box	
			<input type="checkbox"/>	<input type="checkbox"/>
005226	PLML 200X100 1X75	30,30	1	-



PLMP 200X100 1X75

Plenum for air exhaust/supply in galvanised steel, 1 rear outlet Ø80mm, with anti-mortar protection and 1 plug (for CNDFLB 75/63). Air volume setting through TUNE80 SILENT (on request).

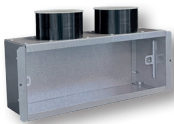
Code	Description	Price €	Box	
			<input type="checkbox"/>	<input type="checkbox"/>
005228	PLMP 200X100 1X75	31,50	1	-



PLMLC 200X100 1X75

Plenum for air exhaust/supply in galvanised steel, 1 short side outlet Ø80mm, with anti-mortar protection and 1 plug (for CNDFLB 75/63).

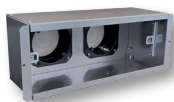
Code	Description	Price €	Box	
			<input type="checkbox"/>	<input type="checkbox"/>
005260	PLMLC 200X100 1X75	32,70	1	-



PLML 300X100 2X75

Plenum for air exhaust/supply in galvanised steel, 2 long side outlets Ø80mm, with anti-mortar protection and 2 plugs (for CNDFLB 75/63). Air volume setting through TUNE80 SILENT (on request).

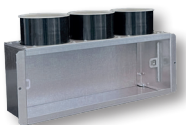
Code	Description	Price €	Box	
			<input type="checkbox"/>	<input type="checkbox"/>
005227	PLML 300X100 2X75	37,40	1	-



PLMP 300X100 2X75

Plenum for air exhaust/supply in galvanised steel, 2 rear outlets Ø80mm, with anti-mortar protection and 2 plugs (for CNDFLB 75/63). Air volume setting through TUNE80 SILENT (on request).

Code	Description	Price €	Box	
			<input type="checkbox"/>	<input type="checkbox"/>
005229	PLMP 300X100 2X75	37,40	1	-



PLML 300X100 3X75

Plenum for air exhaust/supply in galvanized steel, 3 long side outlets Ø80mm, with anti-mortar protection and 3 plugs (for CNDFLB 75/63). Air volume setting through TUNE80 SILENT (on request).

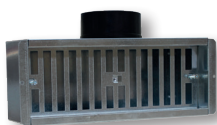
Code	Description	Price €	Box	
			<input type="checkbox"/>	<input type="checkbox"/>
005258	PLML 300X100 3X75	45,60	1	-



PLMP 300X100 3X75

Plenum for air exhaust/supply in galvanized steel, 3 rear outlets Ø80mm, with anti-mortar protection and 3 plugs (for CNDFLB 75/63). Air volume setting through TUNE80 SILENT (on request).

Code	Description	Price €	Box	
			<input type="checkbox"/>	<input type="checkbox"/>
005259	PLMP 300X100 3X75	40,60	1	-



PLMLS 300X100 1X90

Plenum for air exhaust/supply with adjustable shutter, in galvanized steel, 1 long side outlet Ø100mm, with anti-mortar protection and 1 plug (for CNDFLB 90/75).

Code	Description	Price €	Box	
			<input type="checkbox"/>	<input type="checkbox"/>
002266	PLMLS 300X100 1X90	36,20	1	-



PLMPS 300X100 1X90

Plenum for air exhaust/supply with adjustable shutter, in galvanized steel, 1 rear outlet Ø100mm, with anti-mortar protection and 1 plugs (for CNDFLB 90/75).

Code	Description	Price €	Box	
			<input type="checkbox"/>	<input type="checkbox"/>
001547	PLMPS 300X100 1X90	36,20	1	-



PLMLCS 300X100 1X90

Plenum for air exhaust/supply with adjustable shutter, in galvanized steel, 1 short side outlet Ø100mm, with anti-mortar protection and 1 plug (for CNDFLB 90/75).

Code	Description	Price €	Box	
			<input type="checkbox"/>	<input type="checkbox"/>
002267	PLMLCS 300X100 1X90	35,00	1	-



BCRG

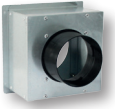
Design grille for air exhaust/supply with integral airflow setting device, front cover in high quality ABS, RAL9010.

Code	Description	Price €	Box	
			<input type="checkbox"/>	<input type="checkbox"/>
000593	BCRG 80	12,90	1	12
000594	BCRG 100	14,00	1	12
001079	BCRG 125	16,30	1	5
000768	BCRG 150	16,30	1	5

**PLML 140X140 1X75**

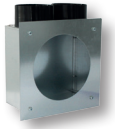
Plenum for air exhaust/supply in galvanized steel, 1 side outlet Ø80mm, with anti-mortar protection and 1 plug (for CNDFLB 75/63).

Code	Description	Price €	Box	
			<input type="checkbox"/>	<input type="checkbox"/>
000748	PLML 140X140 1X75 (for BCRG 80-100)	26,90	1	-

**PLMP 140X140 1X75**

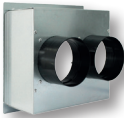
Plenum for air exhaust/supply in galvanized steel, 1 rear outlet Ø80mm, with anti-mortar protection and 1 plug (for CNDFLB 75/63).

Code	Description	Price €	Box	
			<input type="checkbox"/>	<input type="checkbox"/>
000747	PLMP 140X140 1X75 (for BCRG 80-100)	25,70	1	-

**PLML 200X200 2X75**

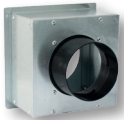
Plenum for air exhaust/supply in galvanized steel, 2 side outlets Ø80mm, with anti-mortar protection and 2 plugs (for CNDFLB 75/63).

Code	Description	Price €	Box	
			<input type="checkbox"/>	<input type="checkbox"/>
000767	PLML 200X200 2X75 (for BCRG 125-150)	32,70	1	-

**PLMP 200X200 2X75**

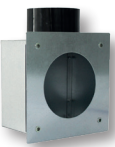
Plenum for air exhaust/supply in galvanized steel, 2 rear outlets Ø80mm, with anti-mortar protection and 2 plugs (for CNDFLB 75/63).

Code	Description	Price €	Box	
			<input type="checkbox"/>	<input type="checkbox"/>
000775	PLMP 200X200 2X75 (for BCRG 125-150)	30,30	1	-

**PLML 200X200 1X90**

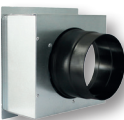
Plenum for air exhaust/supply in galvanized steel, 1 side outlet Ø100mm, with anti-mortar protection and 1 plug (for CNDFLB 90/75).

Code	Description	Price €	Box	
			<input type="checkbox"/>	<input type="checkbox"/>
002269	PLML 200X200 1X90 (for BCRG 125-150)	30,30	1	-

**PLMP 200X200 1X90**

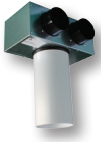
Plenum for air exhaust/supply in galvanized steel, 1 rear outlet Ø100mm, with anti-mortar protection and 1 plug (for CNDFLB 90/75).

Code	Description	Price €	Box	
			<input type="checkbox"/>	<input type="checkbox"/>
002268	PLMP 200X200 1X90 (for BCRG 125-150)	28,00	1	-

**PLMP 200X200 1X125**

Plenum for air exhaust/supply in galvanized steel, 1 rear outlet Ø125mm, with anti-mortar protection and 1 plug.

Code	Description	Price €	Box	
			<input type="checkbox"/>	<input type="checkbox"/>
000766	PLMP 200X200 1X125 (for BCRG 125-150)	29,20	1	-

**ADT90 Ø125 2X75**

90° adaptor, made of galvanised sheet metal casing and PVC duct (Ø125mm, 250mm length), with 2 inlets Ø80mm and 2 plugs (for CNDFLB 75/63).

Code	Description	Price €	Box	
			<input type="checkbox"/>	<input type="checkbox"/>
000063	ADT90 Ø125mm 2X75 (for BCRG125 and VLV)	39,70	1	-

**VLVEST 125**

Extract valve in varnished steel RAL 9010, Ø125mm, manually and gradually adjustable.

Code	Description	Price €	Box	
			<input type="checkbox"/>	<input type="checkbox"/>
000090	VLVEST 125	3,50	1	-

**VLVIMM 125**

Intake valve in varnished steel RAL 9010, Ø125mm, manually and gradually adjustable.

Code	Description	Price €	Box	
			<input type="checkbox"/>	<input type="checkbox"/>
000091	VLVIMM 125	3,50	1	-

**VLVEST/IMM 125**

Extract/intake valve in white PP, Ø125mm, manually and gradually adjustable.

Code	Description	Price €	Box	
			<input type="checkbox"/>	<input type="checkbox"/>
000092	VLVEST/IMM 125	3,50	1	-

DOMESTIC INTERMITTENT VENTILATION

QXD



from
19W

from
**22
dB(A)**

**2
speed**

BB

IPX5



DATASHEET

Top silent centrifugal built-in extract fan suitable to extract stale air from small and medium size environments and to overcome the resistance of long ducting system, suitable for simultaneous extraction of odours and vapours from the ambient through the design front cover and from the toilet bowl or adjacent rooms through the additional Ø50mm side inlet, Ø75mm outlet provided with air-tight shutter compliant with DIN 18017-3.

Code	Description	Price €	Box	
			□	□
004633	QXD - standard	74,70	1	3
004646	QXD T - timer	87,60	1	3
004647	QXD HT - humidity control/timer	100,40	1	3
004812	KFQXD - filter kit - 2pcs	7,20	1	-
004813	SIDE INLET Ø50mm QXD	3,00	1	6
004814	KT-PLASTER QXD	12,90	1	8

BB = ball bearing motor.

QX



from
17W

from
**27
dB(A)**

**2
speed**

BB

IPX4



DATASHEET

Centrifugal fan ideal for air-extraction in small and medium size premises, designed to overcome the resistances of long ducting systems, for wall/panel and ceiling installation, suitable for surface or flush (plasterboard) mounting, available in Ø80mm e Ø100mm, with anti-dust filter.

Code	Description	Price €	Box	
			□	□
PQX00011	QX80 - standard	63,10	1	8
PQX00014	QX100 - standard	63,10	1	8
PQX00012	QX80T - timer	75,90	1	8
PQX00015	QX100T - timer	75,90	1	8
PQX00013	QX80HT - humidity control/timer	87,60	1	8
PQX00016	QX100HT - humidity control/timer	87,60	1	8
004728	KF-QX - filter kit - 2pcs	2,40	1	-
004822	KT-PLASTER QX	3,30	1	8

BB = ball bearing motor.

QUASAR



from
5W

from
22
dB(A)

IP45



DATASHEET

Mixed flow extract fan, Ø100mm, ideal for air-extraction in bathroom, toilet and small/medium premises, suitable to extract stale air directly to the outside or through medium length ducting, for wall/panel, ceiling or window installation.

Code	Description	Price €	Box	
			□	□
001183	QUASAR N - standard	26,90	1	12
002359	QUASAR N BB - standard	32,70	1	12
001373	QUASAR T - timer	38,60	1	12
001197	QUASAR T BB - timer	45,60	1	12
001201	QUASAR 2S BB - 2-speed	43,20	1	12

BB = ball bearing motor.

QD



from
8W

from
26
dB(A)

IPX4



DATASHEET

Design axial fan ideal for air-extraction in bathroom, toilet and small/medium premises, suitable to extract stale air directly to the outside or through short length ducting, available in Ø90mm, Ø100mm, Ø120mm, Ø150mm, for wall/panel, ceiling or window installation.

Code	Description	Price €	Box	
			□	□
003168	QD90 - standard	19,90	1	12
001599	QD100 - standard	19,90	1	12
003141	QD120 - standard	26,90	1	8
001600	QD150 - standard	33,90	1	8
003169	QD90T - timer	29,20	1	12
001601	QD100T - timer	29,20	1	12
003142	QD120T - timer	36,20	1	8
001602	QD150T - timer	43,20	1	8
001792	QD100HT - humidity control/timer	40,90	1	12
004540	QD120HT - humidity control/timer	46,80	1	8
001793	QD150HT - humidity control/timer	53,80	1	8
003657	QD90 BB - standard	24,50	1	12
PQD0000Q	QD100 BB - standard	24,50	1	12
PQD0003Q	QD120 BB - standard	30,30	1	8
PQD0006Q	QD150 BB - standard	38,60	1	8
003658	QD90T BB - timer	32,70	1	12
PQD0001Q	QD100T BB - timer	32,70	1	12
PQD0004Q	QD120T BB - timer	39,70	1	8
PQD0007Q	QD150T BB - timer	46,80	1	8
003140	QD100HT BB - humidity control/timer	42,00	1	12
003143	QD120HT BB - humidity control/timer	49,00	1	8
003144	QD150HT BB - humidity control/timer	57,20	1	8

BB = ball bearing motor.



DATASHEET

Axial fan ideal for air-extraction in bathroom, toilet and small/medium premises, suitable to extract stale air directly to the outside or through short length ducting, available in Ø90mm, Ø100mm, Ø120mm, Ø150mm, for wall/panel, ceiling or window installation.

Code	Description	Price €	Box	
			<input type="checkbox"/>	<input type="checkbox"/>
003171	QS90 - standard	18,70	1	12
PQS0000Q	QS100 - standard	18,70	1	12
PQS0003Q	QS120 - standard	24,50	1	8
PQS0006Q	QS150 - standard	30,30	1	8
003172	QS90T - timer	28,00	1	12
PQS0001Q	QS100T - timer	28,00	1	12
PQS0004Q	QS120T - timer	33,90	1	8
PQS0007Q	QS150T - timer	39,70	1	8
PQS0002Q	QS100HT - humidity control/timer	38,60	1	12
PQS0005Q	QS120HT - humidity control/timer	45,60	1	8
PQS0008Q	QS150HT - humidity control/timer	49,00	1	8
005618	QS90 BB - standard	22,10	1	12
PQS00036	QS100 BB - standard	22,10	1	12
PQS00037	QS120 BB - standard	28,00	1	8
PQS00038	QS150 BB - standard	33,90	1	8
005619	QS90T BB - timer	31,50	1	12
001408	QS100T BB - timer	31,50	1	12
003208	QS120T BB - timer	37,40	1	8
003866	QS150T BB - timer	43,20	1	8
PQS0009Q	QS100HT BB - humidity control/timer	40,90	1	12
PQS0010Q	QS120HT BB - humidity control/timer	48,00	1	8
PQS0011Q	QS150HT BB - humidity control/timer	53,80	1	8

BB = ball bearing motor.



DATASHEET

Axial fan with internal automatic shutters, ideal for air-extraction in bathroom, toilet and small/medium premises, suitable to extract stale air directly to the outside or through short length ducting, available in Ø90mm, Ø100mm, Ø120mm, Ø150mm, for wall/panel, ceiling or window installation.

Code	Description	Price €	Box	
			<input type="checkbox"/>	<input type="checkbox"/>
003174	QA90 - standard	30,30	1	12
000540	QA100 - standard	30,30	1	12
000541	QA120 - standard	36,20	1	8
000542	QA150 - standard	44,40	1	8
003175	QA90T - timer	39,70	1	12
001596	QA100T - timer	39,70	1	12
001597	QA120T - timer	45,60	1	8
001598	QA150T - timer	53,80	1	8
001794	QA100HT - humidity control/timer	50,20	1	12
001256	QA120HT - humidity control/timer	56,10	1	8
001795	QA150HT - humidity control/timer	64,30	1	8
006034	QA90 BB - standard	33,90	1	12
PQA0000Q	QA100 BB - standard	33,90	1	12
PQA0003Q	QA120 BB - standard	39,70	1	8
PQA0006Q	QA150 BB - standard	46,80	1	8
005992	QA90T BB - timer	44,40	1	12
PQA0001Q	QA100T BB - timer	44,40	1	12
PQA0004Q	QA120T BB - timer	49,00	1	8
PQA0007Q	QA150T BB - timer	57,20	1	8
PQA0002Q	QA100HT BB - humidity control/timer	53,80	1	12
PQA0005Q	QA120HT BB - humidity control/timer	59,60	1	8
PQA0008Q	QA150HT BB - humidity control/timer	67,70	1	8

BB = ball bearing motor.

QB



from
8W

from
26
dB(A)

IPX4



DATASHEET

Small axial fan ideal for air-extraction in bathroom, toilet and small premises, suitable to extract stale air directly to the outside or through short length ducting, available in Ø100mm and Ø150mm, for wall/panel or ceiling installation.

Code	Description	Price €	Box	
PQB00000	QB100 - standard	17,50	1	12
002995	QB150 - standard	25,70	1	8
PQB00001	QB100T - timer	24,50	1	12
003012	QB150T - timer	32,70	1	8

QIN

from
8W

IPX4



DATASHEET

Axial fan ideal for air-extraction in bathroom, toilet and small/medium premises, suitable to extract stale air directly to the outside or through short length ducting, available in Ø100mm, Ø120mm and Ø150mm, "in line" configuration to fit standard ducting.

Code	Description	Price €	Box	
PQI00000	QIN100 - standard	17,50	1	12
PQI00001	QIN120 - standard	22,10	1	12
PQI00002	QIN150 - standard	29,20	1	8
PQI00003	QIN100T - timer	25,70	1	12
PQI00004	QIN120T - timer	30,30	1	12
PQI00005	QIN150T - timer	37,40	1	8

ACCESSORIES DOMESTIC INTERMITTENT VENTILATION



EG

External fixed grille made of high quality ABS, shock-proof and UV resistant, RAL9010.

Code	Description	Price €	Box	
			<input type="checkbox"/>	<input type="checkbox"/>
003684	EG100	4,60	1	48
003685	EG120	4,60	1	32
003686	EG150	5,80	1	32



ES

External gravity shutter made of high quality ABS, shock-proof and UV resistant, RAL9010.

Code	Description	Price €	Box	
			<input type="checkbox"/>	<input type="checkbox"/>
PSE00000	ES100	9,30	1	48
PSE00001	ES120	9,30	1	32
PSE00002	ES150	10,50	1	32



WKG

Window kit with external fixed grille, made of high quality ABS, shock-proof and UV resistant, RAL9010.

Code	Description	Price €	Box	
			<input type="checkbox"/>	<input type="checkbox"/>
003690	WKG100	14,00	1	12
004641	WKG100MX (for Quasar)	15,10	1	12
PKV00004	WKG120	16,30	1	8
PKV00005	WKG150	17,50	1	8



WKS

Window kit with gravity shutter made of high quality ABS, shock-proof and UV resistant, RAL9010.

Code	Description	Price €	Box	
			<input type="checkbox"/>	<input type="checkbox"/>
PKV00000	WKS100	17,50	1	12
PKV00001	WKS120	19,90	1	8
PKV00002	WKS150	22,10	1	8



CG

Gasket made of EPDM rubber to guarantee the IPX4 degree of protection against moisture in case of ceiling installation (for QD, QS and QA models).

Code	Description	Price €	Box	
			<input type="checkbox"/>	<input type="checkbox"/>
003689	CG100	4,60	1	-
PKT00001	CG120	4,60	1	-
PKT00002	CG150	5,80	1	-



CGX

Gasket made of EPDM rubber to guarantee the IPX4 degree of protection against moisture in case of ceiling installation (for QX model).

Code	Description	Price €	Box	
			<input type="checkbox"/>	<input type="checkbox"/>
PKT00003	CGX 80/100	5,80	1	-



SF

Fixing feet for QIN range, made of high quality ABS, shock-proof and UV resistant, RAL9010.

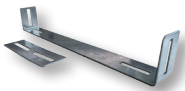
Code	Description	Price €	Box	
			<input type="checkbox"/>	<input type="checkbox"/>
000933	SF100	2,40	1	-
000934	SF120	2,40	1	-
000935	SF150	2,40	1	-



TELESCOPIC DUCT

Made from 100% recycled ABS in black colour or PVC in white colour, adaptable to the wall thickness.

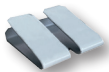
Code	Description	Price €	Box	
			<input type="checkbox"/>	<input type="checkbox"/>
000455	TELESCOPIC DUCT Ø100mm L=300-570mm - black	8,60	1	18
000571	TELESCOPIC DUCT Ø125mm L=300-570mm - white	9,60	1	12
000456	TELESCOPIC DUCT Ø150mm L=300-570mm - black	11,10	1	8



KT-PLASTER QXD

Kit for plasterboard fixing for QXD model.

Code	Description	Price €	Box	
			<input type="checkbox"/>	<input type="checkbox"/>
004814	KT-PLASTER QXD	12,90	1	8



KT-PLASTER QX

Kit for plasterboard fixing for QX model.

Code	Description	Price €	Box	
			<input type="checkbox"/>	<input type="checkbox"/>
004822	KT-PLASTER QX	3,30	1	8

CONTROLS & SENSORS



CTRL-S

Multi-speed remote controller for heat recovery units.

Code	Description	Price €	Box	
			<input type="checkbox"/>	<input type="checkbox"/>
000596	CTRL-S-I - built-in	18,70	1	-
000597	CTRL-S-P - surface	18,70	1	-



CTRL-M

Electronic speed controller for EC motors, with two-pole switch.

Code	Description	Price €	Box	
			<input type="checkbox"/>	<input type="checkbox"/>
003683	CTRL-M-I - built-in	54,20	1	-
003682	CTRL-M-P - surface	54,20	1	-



CTRL-P1

Remote controller for P1-H model, for on/off, speed selection, and heating element activation.

Code	Description	Price €	Box	
			<input type="checkbox"/>	<input type="checkbox"/>
004644	CTRL-P1-I - built-in	24,50	1	-
004643	CTRL-P1-P - surface	24,50	1	-



SEL-3V

Speed selector, 4 positions (OFF included), maximum load 3A.

Code	Description	Price €	Box	
			<input type="checkbox"/>	<input type="checkbox"/>
003789	SEL-3V-I - built-in	47,20	1	-
003790	SEL-3V-P - surface	47,20	1	-



REL-1A

Electronic speed controller, 230V, maximum load 1A.

Code	Description	Price €	Box	
			<input type="checkbox"/>	<input type="checkbox"/>
PRV00001	REL-1A-I - built-in	82,70	1	-
PRV00000	REL-1A-P - surface	82,70	1	-



TIMER

Electronic timer, 230V, maximum load 2A.

Code	Description	Price €	Box	
			<input type="checkbox"/>	<input type="checkbox"/>
PTM00001	TIMER-I - built-in	67,70	1	-
PTM00000	TIMER-P - surface	67,70	1	-



SEN-HY

Humidistat, 230V, maximum load 2A.

Code	Description	Price €	Box	
			<input type="checkbox"/>	<input type="checkbox"/>
003688	SEN-HY-I - built-in	88,80	1	-
003687	SEN-HY-P - surface	88,80	1	-



SEN-PIR

PIR presence detector (infrared), maximum load 4A.

Code	Description	Price €	Box	
			<input type="checkbox"/>	<input type="checkbox"/>
003692	SEN-PIR-I - built-in	115,70	1	-
003691	SEN-PIR-P - surface	115,70	1	-

Industrial ventilation



AIR CIRCULATORS

AD1400A



High volume axial fans suitable to create a uniform indoor climate and to recirculate air in commercial and industrial buildings, dairy barns and greenhouses, with airflow up to 47700m³/h, casing and motor support made of stainless steel, adjustable pitch aerofoil impeller provided with blades manufactured in high quality glass reinforced polypropylene, conveyor made from technopolymer, three-phase EC brushless motor, 200-480Vac 50/60Hz, reversible, speed controllable, IP65, with integrated electronic system and EMC filters, with Modbus interface, supplied pre-cabled.

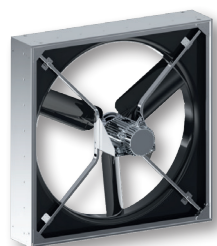


DATASHEET

Code	Description	r/min max	N max	kW	m ³ /h*	Price €
005282	AD1400A-3EC	475	98	1,04	47.706	2.235,20

*AMCA 230-99

AD1400B



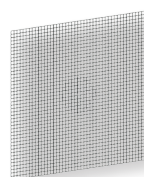
High volume axial fans suitable to create a uniform indoor climate and to recirculate air in commercial and industrial buildings, dairy barns and greenhouses, with airflow up to 49380m³/h, casing and motor support made of galvanised steel, adjustable pitch aerofoil impeller provided with blades manufactured in high quality glass reinforced polypropylene, conveyor made from technopolymer, single-phase EC brushless motor, 220-277Vac 50/60Hz, speed controllable, IP55, with integrated electronic system and EMC filters.



DATASHEET

Code	Description	r/min max	N max	kW	m ³ /h*	Price €
003614	AD1400B-1EC	500	105	1,4	49.380	1.349,40

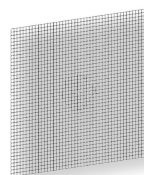
*AMCA 230-99



GRD-B

Bird guard in stainless steel for motor/impeller side installation to prevent birds or other animals from crossing the fan, supplied with hooks and fixing screws.

Code	Description	Price €
005440	GRD-BV-AD1400 - impeller side	134,80
003613	GRD-BM-AD1400 - motor side	146,00



GRD-S

Safety guard in stainless steel for motor/impeller side installation to protect against accidental contact with the moving parts of the motor, supplied with hooks and fixing screws.

Code	Description	Price €
005439	GRD-SV-AD1400 - impeller side	269,60
005437	GRD-SM-AD1400 - motor side	292,00



ES

Motorised galvanised steel shutter to be mounted when the fan is installed on the wall, to prevent air from entering when the fan is switched off, 230V ON-OFF motor supplied.

Code	Description	Price €
005743	ES1400A	530,40



CTRL-HS

3,5" TFT full touch-screen colour graphic display control panel, multi-functional, can control up to 4 units, RS-485 Modbus connection, IP30, 12-30Vdc (4VA max load) or 24Vac 50/60Hz (2W max load).

Code	Description	Price €
004154	CTRL-HS	514,00
001838	24V POWER SUPPLY	31,50



CTRL-XWS

Remote panel to control the ventilation units according to temperature and wind speed (through anemometer AN-SY on request) or for winter destratification and summer comfort (through an additional temperature probe SV-10K on request), IP65 wall-mounted casing, 230Vac 50/60Hz, one temperature probe supplied as standard, can control up to 10 units.

Code	Description	Price €
005324	CTRL-XWS	438,00
002152	AN-SY	168,50
005327	SV-10K	29,20



CTRL-XTHI

Remote panel to control the ventilation units according to temperature and THI level, shower control option (through humidity probe YGRO-100) and auxiliary ventilation activation, IP65 wall-mounted casing, 230Vac 50/60Hz, one temperature probe supplied as standard, can control up to 10 units.

Code	Description	Price €
005325	CTRL-XTHI	718,80
005326	YGRO-100	325,70



CTRL-A

Potentiometer for manual speed adjustment for single fan, with front knob, two-pole on/off switch, yellow led to indicate that the load is active, complete with IP55 wall surface box.

Code	Description	Price €
002049	CTRL-A	52,80



CTRL-A2

Potentiometer for manual speed adjustment of single fan, with front knob, two-pole on/off switches one for the fan and one for the shutter activation, and yellow led to indicate that the load is active, complete with IP55 wall surface box.

Code	Description	Price €
005666	CTRL-A2	69,70

DESTRATIFICATION & COMFORT

MHS



DATASHEET

HVLS (High Volume Low Speed) fans suitable to optimize the energy consumption and maintain thermal comfort in buildings with high ceiling, providing a "wide cone" air distribution under the fan, with airflow up to 439000m³/h, upper structure made from robust painted steel, 5 blades made from EN AW 6063 T6 anodized aluminium to avoid corrosion, hub provided with safety ring, aesthetic plastic hub cover, EC brushless three-phase motor, IP55, 380-440Vac 50/60Hz, reversible, speed controllable, with integrated electronic system and EMC filters, Modbus interface, complete with safety cable kit and 800mm length downrod.

Code	Description	r/min max	N max	kW	m ³ /h*	Price €
	MHS12-360-3EC	110	121	0,57	163.105	
005506	Kit Blades MHS12-360	-	-	-	-	561,60
005520	Kit Motor MHS12-360	-	-	-	-	3.878,60
	MHS18-540-3EC	65	162	0,66	283.089	
005508	Kit Blades MHS18-540	-	-	-	-	726,80
005522	Kit Motor MHS18-540	-	-	-	-	4.256,00
	MHS24-730-3EC	43	213	0,75	438.818	
004979	Kit Blades THS730/MHS24-730	-	-	-	-	1.085,80
005524	Kit Motor MHS24-730	-	-	-	-	4.612,20

MHS complete fan consists of Kit Blades + Kit Motor.
*AMCA 230-99.

WHS



DATASHEET

HVLS (High Volume Low Speed) fans suitable to optimize the energy consumption and maintain thermal comfort in buildings with high ceiling, providing a "narrow cone" air distribution under the fan, with airflow up to about 430000m³/h, upper structure made from robust painted steel, 5 blades made from EN AW 6063 T6 aluminium, hub provided with safety ring, aesthetic plastic hub cover, EC brushless three-phase motor, IP55, 380-440Vac 50/60Hz, reversible, speed controllable, with integrated electronic system and EMC filters, Modbus interface, complete with safety cable kit and 800mm length downrod.

Code	Description	r/min max	N max	kW	m ³ /h*	Price €
	WHS400-3EC	120	272	0,8	271.717	
004913	Kit Blades WHS400	-	-	-	-	542,90
004819	Kit Motor WHS400	-	-	-	-	3.878,60
	WHS500-3EC	105	366	1,1	365.986	
004912	Kit Blades WHS500	-	-	-	-	640,30
004820	Kit Motor WHS500	-	-	-	-	4.256,00
	WHS600-3EC	84	302	1,4	429.464	
004911	Kit Blades WHS600	-	-	-	-	786,50
004821	Kit Motor WHS600	-	-	-	-	4.612,20

WHS complete fan consists of Kit Blades + Kit Motor.
*AMCA 230-99.

THS



DATASHEET

HVLS (High Volume Low Speed) fans suitable to optimize the energy consumption and maintain thermal comfort in buildings with high ceiling, providing a “wide cone” air distribution under the fan, with airflow up to 550000m³/h, upper structure made from robust painted steel, 5 blades made from EN AW 6063 T6 anodized aluminium to avoid corrosion, plastic aerodynamically shaped blade tips, hub provided with safety ring, aesthetic plastic hub cover, EC brushless three-phase motor, IP65, 200-480Vac 50/60Hz, reversible, speed controllable, with integrated electronic system and EMC filters, Modbus interface, precabled, complete with safety cable kit and 800mm length downrod.

Code	Description	r/min max	N max	kW	m ³ /h*	Price €
	THS400-3EC	110	188	1,03	228.721	
004907	Kit Blades THS400	-	-	-	-	603,20
004808	Kit Motor THS400	-	-	-	-	4.728,60
	THS500-3EC	80	208	1,07	299.982	
004906	Kit Blades THS500	-	-	-	-	711,10
004809	Kit Motor THS500	-	-	-	-	4.728,60
	THS600-3EC	60	246	0,9	390.836	
004901	Kit Blades THS600	-	-	-	-	874,60
004810	Kit Motor THS600	-	-	-	-	5.125,10
	THS730-3EC	51	334	1,2	549.500	
004979	Kit Blades THS730/MHS24-730	-	-	-	-	1.085,80
004811	Kit Motor THS730	-	-	-	-	5.532,80

THS complete fan consists of Kit Blades + Kit Motor.
*AMCA 230-99.

LHS



DATASHEET

HVLS (High Volume Low Speed) fans suitable to optimize the energy consumption and maintain thermal comfort in buildings with high ceiling, with airflow up to 134000m³/h, upper structure made from robust painted steel, 3 blades made from EN AW 6063 T6 anodized aluminium to avoid corrosion, black plastic aerodynamically shaped blade tips, hub provided with safety ring, aesthetic plastic hub cover, EC brushless three-phase motor, IP65, 200-480Vac 50/60Hz, reversible, speed controllable, with integrated electronic system and EMC filters, Modbus interface, precabled, complete with safety cable kit and 800mm length downrod.

Code	Description	r/min max	N max	kW	m ³ /h*	Price €
	LHS240-3EC	200	89	0,7	93.256	
005146	Kit Blades LHS240	-	-	-	-	208,80
005139	Kit Motor LHS240	-	-	-	-	2.725,00
	LHS300-3EC	130	85	0,45	113.921	
005147	Kit Blades LHS300	-	-	-	-	233,20
005140	Kit Motor LHS300	-	-	-	-	2.725,00
	LHS360-3EC	100	82	0,38	134.721	
005753	Kit Blades LHS360	-	-	-	-	270,00
005754	Kit Motor LHS360	-	-	-	-	2.725,00

LHS complete fan consists of Kit Blades + Kit Motor.
*AMCA 230-99.



CTRL-HS

3,5" TFT full touch-screen colour graphic display control panel, multi-functional, can control up to 4 units, RS-485 Modbus connection, IP30, 12-30Vdc (4VA max load) or 24Vac 50/60Hz (2W max load).

Code	Description	Price €
004154	CTRL-HS	514,00
001838	24V POWER SUPPLY	31,50



CTRL-XWS

Remote panel to control the ventilation units according to temperature and wind speed (through anemometer AN-SY on request) or for winter destratification and summer comfort (through an additional temperature probe SV-10K on request), IP65 wall-mounted casing, 230Vac 50/60Hz, one temperature probe supplied as standard, can control up to 10 units.

Code	Description	Price €
005324	CTRL-XWS	438,00
002152	AN-SY	168,50
005327	SV-10K	29,20



CTRL-XTHI

Remote panel to control the ventilation units according to temperature and THI level, shower control option (through humidity probe YGRO-100) and auxiliary ventilation activation, IP65 wall-mounted casing, 230Vac 50/60Hz, one temperature probe supplied as standard, can control up to 10 units.

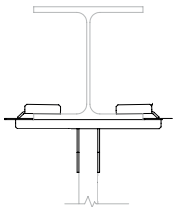
Code	Description	Price €
005325	CTRL-XTHI	718,80
005326	YGRO-100	325,70



CTRL-A

Potentiometer for manual speed adjustment for single fan, with front knob, two-pole on/off switch, yellow led to indicate that the load is active, complete with IP55 wall surface box.

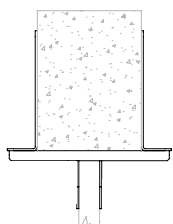
Code	Description	Price €
002049	CTRL-A	52,80



KT-I-BEAM

Beam fixing kit suitable for standard IPE, HEA and HEB profiles, provided with fixing screws.

Code	Description	Price €
003357	KT-I-BEAM	110,30



KT-GLULAM

Beam fixing kit suitable for rectangular sections with base between 100mm and 260mm, provided with fixing screws.

Code	Description	Price €
004009	KT-GLULAM	202,30

HEAT RECOVERY UNITS

QRD2



DATASHEET

Decentralised heat recovery units suitable for ceiling installation to ensure a correct ventilation rate up to 350m³/h in non-residential buildings, external structure made from galvanised steel prepainted RAL9010, internal structure made from EPP, EC brushless motors for energy saving, integrated automatic bypass, high efficient counterflow heat exchanger, integrated grilles for extraction and intake, ISO Coarse 60% (G4) filters supplied, ISO ePM1 65% (F7) on request, multi-functional electronic control complete with LCD display panel, Modbus interface, precabled.

Code	Description	m ³ /h @30Pa	Price €
005572	QRD2	340	1.980,00
005561	KF340G4 - filter kit - 2pcs		29,20
005562	KF340F7 - filter kit - 1pc		49,00

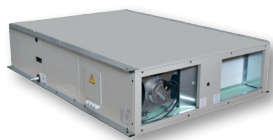
QRD2E



DATASHEET

Decentralised heat recovery units suitable for ceiling installation to ensure a correct ventilation rate up to 310m³/h in non-residential buildings, external structure made from galvanised steel prepainted RAL9010, internal structure made from EPP, EC brushless motors for energy saving, integrated automatic bypass, high efficient enthalpic heat exchanger, integrated grilles for extraction and intake, ISO Coarse 60% (G4) filters supplied, ISO ePM1 65% (F7) on request, multi-functional electronic control complete with LCD display panel, Modbus interface, precabled.

Code	Description	m ³ /h @30Pa	Price €
005573	QRD2E	300	2.450,00
005561	KF340G4 - filter kit - 2pcs		29,20
005562	KF340F7 - filter kit - 1pc		49,00



DATASHEET

Centralised heat recovery units suitable for ceiling and wall installation to ensure a correct ventilation rate upto 4.300m³/h in apartment blocks or non-residential buildings, self-supporting structure with coated steel panels RAL 9002 and 25mm thickness mineral wool thermal and acoustic insulation, centrifugal backward curved blade impellers, high efficient EC brushless motors, integrated automatic bypass, high efficient (>75%) counterflow heat exchanger made from aluminium, ISO ePM10 50% (M5) filter on return air and ISO ePM1 50% (F7) on fresh air, integrated filter pressure switches, complete with multi-functional LCD display controller.

Code	Description	m ³ /h @150Pa	Price €
001426	QRCE 500	470	4.706,00
001427	QRCE 1000	800	5.045,70
001428	QRCE 1500	1.430	7.434,70
001429	QRCE 2000	1.920	8.642,40
001430	QRCE 3000	2.850	11.754,60
001431	QRCE 4000	3.860	13.323,30
-	KF-QRCE 500 M5 Filter - 1pc		129,90
-	KF-QRCE 1000 M5 Filter - 1pc		229,70
-	KF-QRCE 1500 M5 Filter- 1pc		229,70
-	KF-QRCE 2000 M5 Filter- 1pc		394,50
-	KF-QRCE 3000 M5 Filter- 1pc		491,10
-	KF-QRCE 4000 M5 Filter- 1pc		621,00
-	KF-QRCE 500 F7 Filter- 1pc		137,90
-	KF-QRCE 1000 F7 Filter- 1pc		237,70
-	KF-QRCE 1500 F7 Filter- 1pc		237,70
-	KF-QRCE 2000 F7 Filter- 1pc		404,00
-	KF-QRCE 3000 F7 Filter- 1pc		506,90
-	KF-QRCE 4000 F7 Filter- 1pc		633,70

QRCE ACCESSORIES

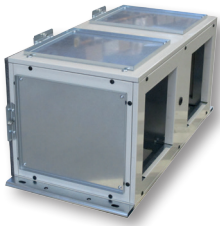


TPR

Rainproof cowl made from coated steel for horizontal unit (TPR-H) and for horizontal heating/cooling external module (TPR-CH), for outdoor installation (*).

Code	Description	Price €
001578	TPR-H 05	143,50
001579	TPR-H 10	159,80
001580	TPR-H 15	252,80
001581	TPR-H 20	372,30
001582	TPR-H 30	410,00
001583	TPR-H 40	446,50
001778	TPR-CH 05	42,80
001779	TPR-CH 10	47,80
001780	TPR-CH 15	75,50
001781	TPR-CH 20	112,00
001782	TPR-CH 30	123,30
001783	TPR-CH 40	133,30

*please contact Aerauliqa for the codes and prices of the vertical versions.



PLM

External multiport module to be directly connected to the unit on both front sides to allow air inlet or outlet in all directions.

Code	Description	Price €
001748	PLM 05	747,30
001749	PLM 10	803,90
001750	PLM 15	850,30
001751	PLM 20	892,00
001752	PLM 30	977,40
001753	PLM 40	1.045,30



SKR

Adjusting damper made from aluminium frame and aluminium opposing blades, controllable by means of on/off electrical actuator (on request).

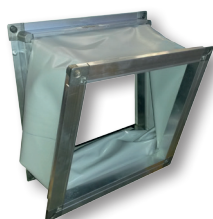
Code	Description	Price €
001755	SKR1 05	138,40
001756	SKR1 10	156,00
001757	SKR1 15	183,60
001758	SKR1 20	275,50
001759	SKR1 30	305,60
001760	SKR1 40	374,90
001761	SKR2 05	138,40
001762	SKR2 10	156,00
001763	SKR2 15	183,60
001764	SKR2 20	183,60
001765	SKR2 30	264,20
001766	SKR2 40	264,20



SSE

On/off actuator supplied already mounted on the damper, 2Nm torque.

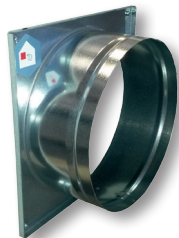
Code	Description	Price €
001754	SSE	355,90



GAT

Flexible flanged connector to prevent the transmission of vibrations from the unit to the duct.

Code	Description	Price €
001767	GAT1 05	113,20
001797	GAT1 10	140,90
001798	GAT1 15	159,80
001799	GAT1 20	215,00
001800	GAT1 30	246,50
001801	GAT1 40	295,70
001768	GAT2 05	113,20
001802	GAT2 10	140,90
001803	GAT2 15	159,80
001804	GAT2 20	159,80
001805	GAT2 30	215,00
001806	GAT2 40	215,00



BCC

Round connection made from galvanised steel with coupling flange, available in models BCC1 or BCC2 depending on the elements to be connected.

Code	Description	Price €
001590	BCC1 05	47,80
001591	BCC1 10	59,10
001592	BCC1 15	59,10
001593	BCC1 20	70,40
001594	BCC1 30	85,60
001595	BCC1 40	85,60
001772	BCC2 05	47,80
001773	BCC2 10	59,10
001774	BCC2 15	59,10
001775	BCC2 20	70,40
001776	BCC2 30	85,60
001777	BCC2 40	85,60



DPS

Differential pressure sensor mounted and wired on the unit for constant airflow control.

Code	Description	Price €
001770	DPS	339,70



AQS

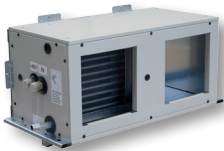
CO₂ sensor to be placed on the return duct in order to modulate the airflow to obtain the desired air quality level.

Code	Description	Price €
001771	AQS	1.615,30

SKE

Electric heater for pre/post heating mounted on the unit with galvanised steel frame and filament type elements provided with manual and automatic reset thermostats.

Code	Description	Price €
001730	SKE 05	632,70
001731	SKE 10	661,70
001732	SKE 15	861,70
001733	SKE 20	1.060,40
001734	SKE 30	1.166,10
001735	SKE 40	1.282,00

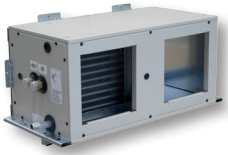


CDX

External 3-row direct expansion module for horizontal installation for heating/cooling directly connected to the unit on air supply/return side, suitable for R410A, complete with aluminium dray tray (*).

Code	Description	Price €
001742	CDX-H 05	953,60
001743	CDX-H 10	1.114,50
001744	CDX-H 15	1.252,90
001745	CDX-H 20	1.401,50
001746	CDX-H 30	1.650,50
001747	CDX-H 40	1.879,50

*please contact Aerauliqa for the codes and prices of the vertical versions.



CCS

External water 3-row module for horizontal installation for heating/cooling directly connected to the unit on supply/return air side, complete with aluminium dray tray (*).

Code	Description	Price
001584	CCS-H 05	896,90
001585	CCS-H 10	1.075,50
001586	CCS-H 15	1.214,00
001587	CCS-H 20	1.351,20
001588	CCS-H 30	1.631,60
001589	CCS-H 40	1.845,50

*please contact Aerauliqa for the codes and prices of the vertical versions.



V33

3-way water valve with modulating electric actuator to adjust the water flow for the heating/cooling modules (fittings and connecting pipes not included).

Code	Description	Price €
001736	V33 05	435,20
001737	V33 10	435,20
001738	V33 15	515,80
001739	V33 20	515,80
001740	V33 30	597,50
001741	V33 40	597,50

WALL AXIAL

QAP



DATASHEET

Compact wall mounted axial fans suitable to extract air up to 17200m³/h in commercial and industrial buildings with air temperature up to +70°C, mild steel plate coated RAL 7032, adjustable pitch aerofoil impeller provided with blades made from high quality glass reinforced polypropylene, single/three-phase compact TEAO IP55 motor coated RAL 7032 with integral thermal protection, complete with inlet protection guard and external IP55 terminal box fitted to a free flying lead.

Code	Description	Motor	Pole	kW	m ³ /h	Price €
002240	QAP250/4-1AC	1AC	4	0,08	960	280,00
002241	QAP250/4-3AC	3AC	4	0,09	1.190	280,00
002242	QAP315/4-1AC	1AC	4	0,12	2.000	289,00
002243	QAP315/4-3AC	3AC	4	0,12	1.850	292,00
002244	QAP350/4-1AC	1AC	4	0,12	2.450	303,00
002245	QAP350/4-3AC	3AC	4	0,12	2.220	305,00
002246	QAP400/4-3AC	3AC	4	0,33	5.240	363,00
002247	QAP450/4-3AC	3AC	4	0,37	6.120	369,00
002248	QAP500/4-1AC	1AC	4	0,41	6.770	398,00
002249	QAP500/4-3AC	3AC	4	0,72	9.500	446,00
002250	QAP500/6-3AC	2AC	6	0,20	5.470	437,00
002251	QAP560/4-1AC	3AC	4	0,92	12.060	498,00
002252	QAP560/4-3AC	3AC	4	0,95	12.420	498,00
002253	QAP560/6-3AC	3AC	6	0,30	7.790	464,00
002254	QAP630/4-1AC	1AC	4	1,45	17.200	549,00
002255	QAP630/4-3AC	3AC	4	1,36	16.530	553,00



Impeller side guard

Impeller side guard made from powder coated steel RAL 7040 provided with clips and screws in order to protect against accidental contact with moving parts of the fan.

Code	Description	Price €
CTR00049	078C-0250-C	11,60
000451	078C-0315-C	12,80
002301	078C-0350-C	12,80
001438	078C-0400-C	14,00
002322	078C-0450-C	17,50
000997	078C-0500-C	18,60
002302	078C-0560-C	22,30
CTR00048	078C-0630-C	29,20



Louvre shutter

Louvre shutter made from durable polypropylene to be mounted separately from the fan, in order to prevent air flowing back from outside when the fan is not operating.

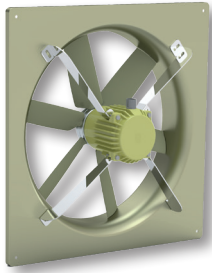
Code	Description	Price €
CTR00067	064-0250-C	44,90
CTR00032	064-0315-C	53,90
CTR00068	064-0350-C	55,00
CTR00069	064-0400-C	66,20
002307	064-0450-C	83,10
002298	064-0500-C	88,70
002299	064-0560-C	123,60
002300	064-0630-C	130,30



Transformer controller

Transformer voltage controller with 5-speed steps for single/three-phase motors used to change the number of revolutions, complete with on/off flashing indicator, 230V single-phase - 400V three-phase, max current 25A.

Code	Description	Price €
003081	R-E-1.5G	157,20
003082	R-D-1G	343,70
003083	R-E-2G	206,60
003084	R-D-2G	379,60
003086	R-D-5.2G	588,50



Compact wall mounted axial fans suitable to extract air up to 17200 m³/h in agricultural applications with air temperature up to +70°C, mild steel plate coated RAL 7032, stainless steel motor support brackets and screws, adjustable pitch aerofoil impeller provided with blades made from high quality glass reinforced polypropylene, single-phase compact TEAO IP55 motor with integral thermal protection and external IP55 terminal box fitted to a free flying lead.

Code	Description	Motor	Pole	kW	m ³ /h	Price €
005195	ASX500/4-1AC	1AC	4	0,41	6.770	458,00
005201	ASX630/4-1AC	1AC	4	1,45	17.200	631,00



DATASHEET



Louvre shutter

Louvre shutter made from durable polypropylene to be mounted separately from the fan, in order to prevent air flowing back from outside when the fan is not operating.

Code	Description	Price €
002298	064-0500-C	88,70
002300	064-0630-C	130,30



Transformer controller

Transformer voltage controller with 5-speed steps for single/three-phase motors used to change the number of revolutions, complete with on/off flashing indicator, 230V single-phase - 400V three-phase, max current 25A.

Code	Description	Price €
003083	R-E-2G	206,60

DUCTED

LC & SC



ErP
327



Long and short case ducted axial fans suitable for extracting air in commercial and industrial applications where high performance combined with robustness, durability and corrosion resistance are required, fan casing from robust hot dipped galvanised sheet steel, variable pitch angle impellers equipped with blades made of high quality die-cast aluminium, totally enclosed motors, fitted with ball bearings, single or three-phase, IE3, IP55, class F or H insulation and electrical connections to the motor contained in an IP55 terminal box, fixed to the outside of the fan casing.

Wide range of fans and accessories, available with diameters from 250mm to 2000mm and 2,4,6 or 8 poles motors.



DATA SHEET

For specific selection contact [Aerauliqa](#).

ROOF

QTC



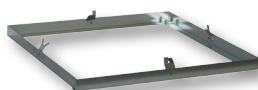
**ErP
1253**



DATA SHEET

Roof mounted centrifugal fans with compact design, for horizontal discharge or vertical (through accessory on request) suitable to extract air directly to the outside or through ducting, with airflow up to 19.400m³/h, in commercial and industrial buildings, with air temperature up to +60°C, galvanised steel support housing, ABS rainproof cowl, protection guard made of steel, centrifugal backward curved blade impellers manufactured from technopolymer, single/three-phase IP54 asynchronous AC external rotor motors in class F insulation, complete with IP55 terminal box.

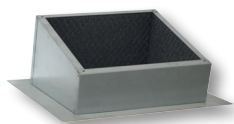
Code	Description	Motor	Pole	kW	m ³ /h	Price €
002487	QTC20-1AC	1AC	4	0,13	1.980	572,40
002488	QTC20-3AC	3AC	4	0,13	1.980	560,70
002489	QTC40-1AC	1AC	4	0,37	3.950	765,10
002490	QTC40-3AC	3AC	4	0,33	3.950	741,10
002491	QTC60-1AC	1AC	4	0,58	5.500	876,10
002492	QTC60-3AC	3AC	4	0,54	5.600	841,10
002493	QTC80-3AC	3AC	6	0,48	7.200	1.179,80
002494	QTC100-3AC	3AC	4	1,45	10.400	1.355,10
002495	QTC150-3AC	3AC	6	1,45	14.400	1.746,40
002496	QTC200-3AC	3AC	4	3,90	19.400	2.493,90



BASE

Counter-base made from galvanised steel with metal strips to ensure an effective anchorage to the support structure.

Code	Description	Price €
003439	BASE QTC20	28,10
003440	BASE QTC40/60	28,10
003441	BASE QTC80/100	30,30
003442	BASE QTC150/200	31,50



PURLIN BOX 15°

Purlin box made from galvanised steel with insulation foam for installation on 15° slanted roof.

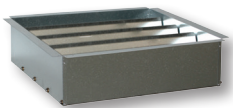
Code	Description	Price €
003427	PURLIN BOX 15° QTC20	137,80
003428	PURLIN BOX 15° QTC40/60	164,70
003429	PURLIN BOX 15° QTC80/100	223,00
003430	PURLIN BOX 15° QTC150/200	279,20



PURLIN BOX H300

Purlin box made from galvanised steel with insulation foam for installation on flat roof.

Code	Description	Price €
003431	PURLIN BOX FLAT H300 QTC20	135,40
003432	PURLIN BOX FLAT H300 QTC40/60	163,50
003433	PURLIN BOX FLAT H300 QTC80/100	213,70
003434	PURLIN BOX FLAT H300 QTC150/200	225,40



SRD/G

Gravity shutter made from galvanised steel to prevent leaks of air and heat losses when fan is not operating, complete with screws.

Code	Description	Price €
003435	SRD/G QTC20	224,30
003436	SRD/G QTC40/60	231,20
003437	SRD/G QTC80/100	244,20
003438	SRD/G QTC150/200	315,40



KDFPP

Rainproof deflector kit made from galvanised steel to further protect the fan in case of particularly bad weather, complete with screws.

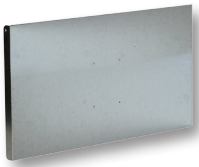
Code	Description	Price €
002697	KDFPP QTC20 - 4pcs	22,20
002698	KDFPP QTC40/60 - 4pcs	28,10
002700	KDFPP QTC80/100 - 4pcs	35,00
002702	KDFPP QTC150/200 - 4pcs	45,60



KDFV

Vertical discharge deflector kit made from galvanised steel complete with screws to deflect the airflow upward.

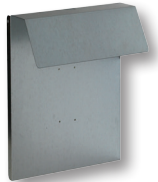
Code	Description	Price €
002652	KDFV QTC20 - 4pcs	39,70
002653	KDFV QTC40 - 4pcs	46,80
002654	KDFV QTC60 - 4pcs	52,60
002655	KDFV QTC80/100 - 4pcs	67,70
002657	KDFV QTC150/200 - 4pcs	87,60



PNLL

Side panel made from galvanised steel to close one of the discharge side of the roof fan, complete with screws.

Code	Description	Price €
002690	PNLL QTC20	18,70
002691	PNLL QTC40	21,00
002692	PNLL QTC60	23,30
002693	PNLL QTC80/100	25,70
002695	PNLL QTC150/200	30,30



PNLSS

Service switch panel made from galvanised steel to support and protect the service switch, complete with screws.

Code	Description	Price €
003528	PNLSS QTC20/200	8,20



Service switch

4-pole service switch with max current 16A.

Code	Description	Price €
002704	SEZIONATORE 4P	63,10



Transformer controller

Transformer voltage controller with 5-speed steps for single/three-phase motors used to change the number of revolutions, complete with on/off flashing indicator, 230V single-phase - 400V three-phase, max current 25A.

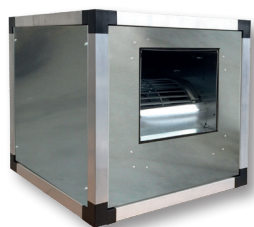
Code	Description	Price €
003081	R-E-1.5G	157,20
003082	R-D-1G	343,70
003083	R-E-2G	206,60
003084	R-D-2G	379,60
003085	R-E-3.5G	255,80
003086	R-D-5.2G	588,50
003087	R-D-7	609,90
003088	R-D-14	945,80

BOX

QUBIK-S



ErP
1253



DATASHEET

Soundproof single-skin box fans with suitable to supply or extract air with flow rates up to 4430m³/h in residential, commercial and industrial applications where a particularly silent operation and air temperatures up to +40°C are required, structure with extruded aluminium profiles, removable and interchangeable galvanised steel panels, washable soundproofing lining in technopolymer (15mm thick), side inspection panel, forward curved blade impeller, single-phase 3-speed totally enclosed motors, IP20/IP55, direct drive double inlet centrifugal fan totally insulated from the external structure with IP55 terminal box.

Code	Description	Motor	Pole	kW	m ³ /h	Price €
005755	QUBIK-S15-1AC	1AC	4	0,15	1.660	598,00
005756	QUBIK-S25-1AC	1AC	4	0,37	2.750	634,40
005757	QUBIK-S35-1AC	1AC	4	0,55	3.180	800,80
005758	QUBIK-S50-1AC	1AC	6	0,74	4.430	1.092,00

QUBIK-DS



ErP
1253



DATASHEET

Soundproof double-skin box fans suitable to supply or extract air with flow rates up to 4430m³/h in residential, commercial and industrial applications where a particularly silent operation and air temperatures up to +40°C are required, structure with extruded aluminium profiles, removable and interchangeable galvanised steel panels, washable soundproofing lining in technopolymer (15mm thick), side inspection panel, forward curved blade impeller, single-phase 3-speed totally enclosed motors, IP20/IP55, direct drive double inlet centrifugal fan totally insulated from the external structure with IP55 terminal box.

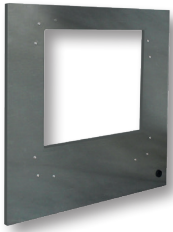
Code	Description	Motor	Pole	kW	m ³ /h	Price €
005759	QUBIK-DS15-1AC	1AC	4	0,15	1.660	655,20
005760	QUBIK-DS25-1AC	1AC	4	0,37	2.750	702,00
005761	QUBIK-DS35-1AC	1AC	4	0,55	3.180	873,60
005762	QUBIK-DS50-1AC	1AC	6	0,74	4.430	1.185,60



PNLC

Galvanised steel panel with washable acoustic lining with 15mm thickness, with circular inlet/outlet spigot. Available in single-skin panel (S) or double-skin (DS).

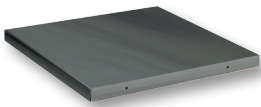
Code	Description	Price €
005763	PNLC-QUBIK-S15	76,00
005764	PNLC-QUBIK-S25	96,00
005765	PNLC-QUBIK-S35	104,00
005766	PNLC-QUBIK-S50	144,00
005767	PNLC-QUBIK-DS15	96,00
005768	PNLC-QUBIK-DS25	124,00
005769	PNLC-QUBIK-DS35	132,00
005770	PNLC-QUBIK-DS50	188,00



PNLR

Galvanised steel panel with washable acoustic lining with 15mm thickness, with rectangular inlet. Available in single-skin panel (S) or double-skin (DS).

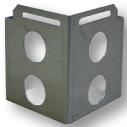
Code	Description	Price €
005771	PNLR-QUBIK-S15	40,00
005772	PNLR-QUBIK-S25	48,00
005773	PNLR-QUBIK-S35	52,00
005774	PNLR-QUBIK-S50	84,00
005775	PNLR-QUBIK-DS15	60,00
005776	PNLR-QUBIK-DS25	76,00
005777	PNLR-QUBIK-DS35	80,00
005778	PNLR-QUBIK-DS50	128,00



TP

Rainproof cowl made from galvanised steel for outdoor installation.

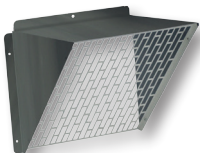
Code	Description	Price €
002517	TP-QUBIK15	18,40
002518	TP-QUBIK25/35	22,70
002519	TP-QUBIK50	30,30



KFEET

Mounting feet kit made from galvanised steel.

Code	Description	Price €
002523	KFEET-QUBIK - 4pz	30,30



TRM

Rainproof outlet discharge made from galvanised steel complete with protection guard to be mounted on the outlet of the fan.

Code	Description	Price €
002520	TRM-QUBIK15	42,20
002521	TRM-QUBIK25/35	57,30
002522	TRM-QUBIK50	69,30



Service switch

4-pole service switch with max current 16A.

Code	Description	Price €
002704	SEZIONATORE 4P	63,10

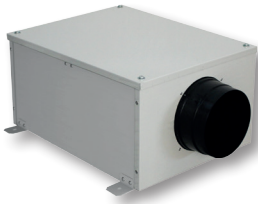


3-speed selector

3-speed selector with front selection knob, including off position, available for surface or recessed mounting, max current 3A (SEL-3V) and 12A (COMMUTATORE 12A).

Code	Description	Price €
003790	SEL-3V-P - surface	47,20
003789	SEL-3V-I 2M - built-in	47,20
003333	COMMUTATORE 12A	49,10

QBX								
------------	---	---	---	--	--	--	--	--



Compact acoustic in-line centrifugal box fans suitable for horizontal or vertical mounting to supply or extract air up to 825m³/h in residential, commercial and industrial buildings where a particularly silent operation and air temperature up to +40°C are required, outer casing made from coated steel RAL 9010, removable top cover, self-extinguishing technopolymer acoustic lining, spigots made from polypropylene, centrifugal back-curved or forward-curved blade impeller, single-phase EC brushless with ball bearings and integral thermal protection, IPX2, complete with external IP55 terminal box.



DATASHEET

Code	Description	Motor	Pole	kW	m ³ /h	Price €
000010	QBX125-1EC	1EC	-	0,031	312	224,60
000011	QBX150-1EC	1EC	-	0,041	360	235,90
001157	QBX125-1EC PLUS	1EC	-	0,083	469	381,90
001158	QBX150-1EC PLUS	1EC	-	0,083	566	393,10
001959	QBX200-1EC PLUS	1EC	-	0,177	825	404,40



CTRL-M

Potentiometer for EC brushless motor with front knob, two-pole on/off switch and yellow led, available for surface or recessed mounting.

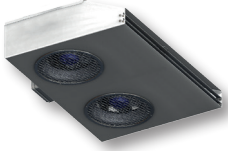
Code	Description	Price €
003682	CTRL-M-P - surface	54,20
003683	CTRL-M-I - built-in	54,20

CARPARK

JDEC



--	--	--	--	--	--	--	--



Extremely compact centrifugal induction fans suitable for continuous operation for the removal of pollutants, CO and cool smoke with temperatures up to +55°C in closed garages with air flow rates up to 2400m³/h, low profile (h=138mm) to obviate architectural-structural problems, galvanised steel structure and integrated fixing brackets, two backward curved blade impellers in technopolymer dynamically balanced, galvanised steel protection grids, two single-phase EC brushless motors, IP55, class F, external IP55 terminal box supplied.



DATASHEET

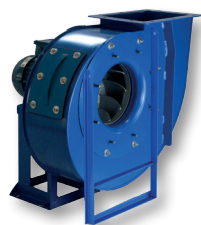
Code	Description	Motor	Pole	kW	m ³ /h	Price €
004245	JDEC-2-12N	1EC	2	0,34	2.400	951,00

BACKWARD CURVED CENTRIFUGAL

QPRN



ErP
327



Centrifugal medium pressure fans with backward curved impeller suitable to extract clean or slightly dusty air in industrial buildings with air temperature between -20°C and +60°C, volute casing made from coated steel in bolted orientable version, single inlet backward curved impeller made from welded and coated steel connected directly to the motor shaft supported by the pedestal (ES.4), asynchronous three-phase IE3, IP55, class F motor.

- For bigger sizes, specific performances, special versions and other inquiries, contact the technical sales team of Aerauliqua



DATASHEET

Code	Description	Motor	Pole	kW	m ³ /h	Price €
-	QPRN 280/2	1AC	4	1,1	3.850	1.021,50
-	QPRN 310/2	3AC	4	2,2	5.400	1.366,70
-	QPRN 310/4	1AC	4	0,18	2.700	937,00
-	QPRN 350/2	3AC	2	3	7.650	1.633,50
-	QPRN 350/4	1AC	4	0,37	3.850	1.076,30
-	QPRN 400/4	3AC	4	0,55	5.400	1.252,50
-	QPRN 450/4	3AC	4	0,75	6.850	1.566,80
-	QPRN 500/4	3AC	4	1,5	9.500	1.947,80
-	QPRN 560/4	1AC	4	3	13.500	2.463,40
-	QPRN 630/4	3AC	4	5,5	19.000	3.205,10

QPRS



ErP
327



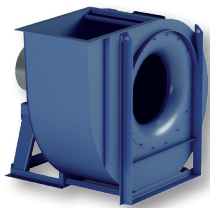
Centrifugal low pressure fans with backward curved impeller suitable to extract clean and non-abrasive dusty air, also containing small amount of sawdust, various clips and granular material, in industrial buildings with air temperature between -20°C and +60°C, volute casing made from coated steel in bolted orientable version, single inlet backward curved impeller made from welded and coated steel connected directly to the motor shaft supported by the pedestal (ES.4), asynchronous three-phase IE3, IP55, class F motor.

- For bigger sizes, specific performances, special versions and other inquiries, contact the technical sales team of Aerauliqua



DATASHEET

Code	Description	Motor	Pole	kW	m ³ /h	Price €
-	QPRS280/2	3AC	2	0,55	1.900	690,60
-	QPRS310/2	3AC	2	1,1	2.700	953,60
-	QPRS350/2	3AC	2	2,2	3.850	1.291,80
-	QPRS400/2	3AC	2	4	5.400	1.706,10
-	QPRS450/2	3AC	2	7,5	7.650	2.431,20
-	QPRS500/2	3AC	2	11	10.800	3.193,20
-	QPRS500/4	3AC	4	1,1	5.400	1.739,40
-	QPRS560/4	3AC	4	2,2	7.650	2.496,70
-	QPRS630/4	3AC	4	4	10.800	3.208,70



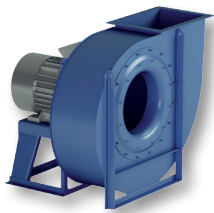
Centrifugal low pressure fans with backward curved impeller suitable to extract clean and slightly dusty air in industrial buildings with air temperature between -10°C and +60°C, volute casing made from coated steel in bolted orientable or fixed welded version, single inlet backward curved impeller made from welded and coated steel connected directly to the motor shaft supported by the pedestal (ES.4), asynchronous three-phase IE3 with PTC, IP55, class F motor, inspection door fitted as standard from size 900.

- For bigger sizes, specific performances, special versions and other inquiries, contact the technical sales team of Aerauliqa



DATASHEET

Code	Description	Motor	Pole	kW	m³/h	Price €
-	QPRA250/2	3AC	2	0,55	2.520	804,90
-	QPRA280/2	3AC	2	1,10	3.600	1.119,30
-	QPRA310/2	3AC	2	2,20	5.400	1.497,70
-	QPRA310/4	3AC	4	0,18	2.520	1.026,70
-	QPRA350/2	3AC	2	3	7.200	1.789,90
-	QPRA350/4	3AC	4	0,37	3.600	1.179,40
-	QPRA400R/4	3AC	4	0,55	3.960	1.372,40
-	QPRA400/4	3AC	4	0,75	4.320	1.542,00
-	QPRA450R/4	3AC	4	0,75	4.680	1.716,70
-	QPRA450/4	3AC	4	1,10	5.400	1.797,70
-	QPRA500R/4	3AC	4	1,50	9.000	2.134,30
-	QPRA500/4	3AC	4	2,20	10.800	2.228,20
-	QPRA560R/4	3AC	4	3	12.600	2.699,20
-	QPRA560/4	3AC	4	4	16.200	2.880,50
-	QPRA630R/4	3AC	4	5,50	19.800	3.512,00
-	QPRA630/4	3AC	4	7,50	21.600	3.847,20
-	QPRA710R/4	3AC	4	11	25.200	4.817,80
-	QPRA710R/6	3AC	6	3	16.200	3.870,70
-	QPRA710/4	3AC	4	15	32.400	5.449,20
-	QPRA710/6	3AC	6	4	21.600	4.140,80
-	QPRA800R/4	3AC	4	18,50	39.600	6.696,40
-	QPRA800R/6	3AC	6	5,50	25.200	5.186,90
-	QPRA800/4	3AC	4	22	36.000	7.228,60
-	QPRA800/6	3AC	6	7,50	28.800	5.672,20
-	QPRA900R/4	3AC	4	37	54.000	10.824,10
-	QPRA900R/6	3AC	6	11	36.000	7.826,20
-	QPRA900/4	3AC	4	45	61.200	11.869,00
-	QPRA900/6	3AC	6	15	39.600	8.891,90
-	QPRA1000R/6	3AC	6	18,50	46.800	10.771,90
-	QPRA1000/6	3AC	6	22	54.000	11.580,80



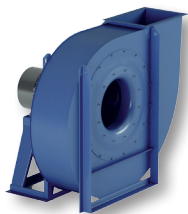
Centrifugal medium-low pressure fans with backward curved impeller suitable to extract clean or dusty non-abrasive air, also containing small amount of sawdust, various chips, granular material, in industrial buildings with air temperature between -10°C and +60°C, volute casing made from coated steel in bolted orientable or fixed welded version, single inlet backward curved impeller made from welded and coated steel connected directly to the motor shaft supported by the pedestal (ES.4), asynchronous three-phase IE3 with PTC, IP55, class F motor, inspection door fitted as standard from size 710.

- For bigger sizes, specific performances, special versions and other inquiries, contact the technical sales team of Aerauliqua



DATA SHEET

Code	Description	Motor	Pole	kW	m ³ /h	Price €
-	QPRB250/2	3AC	2	0,37	1.080	657,60
-	QPRB280/2	3AC	2	0,55	1.440	756,70
-	QPRB310/2	3AC	2	1,10	2.160	1.045,00
-	QPRB350/2	3AC	4	2,20	2.880	1.415,50
-	QPRB400/2	3AC	2	4	4.320	1.869,40
-	QPRB450R/2	3AC	2	5,50	7.200	2.347,00
-	QPRB450/2	3AC	2	7,50	7.920	2.663,90
-	QPRB500R/2	3AC	2	7,50	7.200	3.498,90
-	QPRB500/2	3AC	2	11	10.080	3.498,90
-	QPRB500/4	3AC	4	1,10	3.600	1.905,90
-	QPRB560R/2	3AC	2	15	12.600	4.709,50
-	QPRB560/2	3AC	2	15	10.080	5.226,00
-	QPRB560/4	3AC	4	2,20	6.120	2.735,70
-	QPRB630R/2	3AC	2	22	10.800	6.500,70
-	QPRB630/2	3AC	2	30	14.400	7.145,20
-	QPRB630/4	3AC	4	4	10.800	3.515,80
-	QPRB710R/4	3AC	4	5,50	10.080	4.536,00
-	QPRB710/4	3AC	4	7,50	14.400	4.872,60
-	QPRB800R/4	3AC	4	11	16.200	6.048,00
-	QPRB800/4	3AC	4	15	25.200	6.679,50
-	QPRB900R/4	3AC	4	18,50	18.000	8.504,60
-	QPRB900/4	3AC	4	22	25.200	9.036,80
-	QPRB900/4	3AC	4	30	32.400	10.179,60



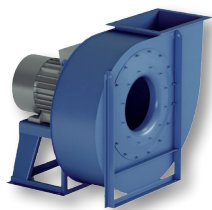
Centrifugal medium pressure fans with backward curved impeller suitable to extract clean or slightly dusty air or for pneumatic transport of solid materials mixed with air, fumes, fine dust, in industrial buildings with air temperature between -10°C and +60°C, volute casing made from coated steel in bolted orientable or fixed welded version, single inlet backward curved impeller made from welded and coated steel connected directly to the motor shaft supported by the pedestal (ES.4), asynchronous three-phase IE3 with PTC, IP55, class F motor, inspection door fitted as standard from size 710.

- For bigger sizes, specific performances, special versions and other inquiries, contact the technical sales team of Aerauliqa



DATASHEET

Code	Description	Motor	Pole	kW	m ³ /h	Price €
-	QPRC400R/2	3AC	2	2,20	2.880	1.656,80
-	QPRC400/2	3AC	2	3	3.600	1.749,40
-	QPRC450R/2	3AC	2	4	4.320	2.092,60
-	QPRC450/2	3AC	2	5,50	5.400	2.332,50
-	QPRC500R/2	3AC	2	7,50	7.200	2.850,50
-	QPRC500/2	3AC	2	11	8.640	3.483,20
-	QPRC560R/2	3AC	2	11	8.640	3.925,50
-	QPRC560R/4	3AC	4	1,50	4.680	2.489,10
-	QPRC560/2	3AC	2	-	12.600	4.556,80
-	QPRC560/4	3AC	4	-	5.400	2.583,10
-	QPRC630R/2	3AC	2	22	14.400	6.528,10
-	QPRC630R/4	3AC	4	3	6.120	3.363,10
-	QPRC630/2	3AC	2	30	18.000	7.687,80
-	QPRC630/4	3AC	4	4	7.920	3.543,20
-	QPRC710R/2	3AC	2	37	19.800	10.237,00
-	QPRC710R/4	3AC	4	4	9.360	4.194,20
-	QPRC710/2	3AC	2	45	21.600	11.266,30
-	QPRC710/4	3AC	4	5,50	10.800	4.457,70
-	QPRC800R/4	3AC	4	7,50	10.800	5.440,10
-	QPRC800/4	3AC	4	11	18.000	5.937,10
-	QPRC900R/4	3AC	4	15	19.800	7.678,70
-	QPRC900/4	3AC	4	22	25.200	8.777,20
-	QPRC1000R/4	3AC	4	30	28.800	10.661,10
-	QPRC1000/4	3AC	4	37	36.000	11.587,30



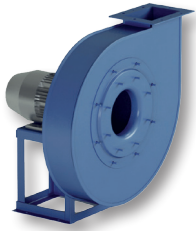
Centrifugal medium-high pressure fans with backward curved impeller suitable to extract or transport clean or dusty non-abrasive air, sawdust, various chips, granular material (but not including filaments), in industrial buildings with air temperature between -10°C and +60°C, volute casing made from coated steel in bolted orientable or fixed welded version connected directly to the motor shaft supported by the pedestal (ES.4), single inlet backward curved impeller made from welded and coated steel, asynchronous three-phase IE3 with PTC, IP55, class F motor, inspection door fitted as standard from size 710.

- For bigger sizes, specific performances, special versions and other inquiries, contact the technical sales team of Aerauliqua



DATASHEET

Code	Description	Motor	Pole	kW	m³/h	Price €
-	QPRD220/2	3AC	2	0,18	790	561,00
-	QPRD250R/2	3AC	2	0,25	1.080	633,90
-	QPRD250/2	3AC	2	0,37	1.370	638,00
-	QPRD280R/2	3AC	2	0,55	1.620	733,20
-	QPRD280/2	3AC	2	0,75	1.800	897,60
-	QPRD310R/2	3AC	2	1,10	2.520	955,00
-	QPRD310/2	3AC	2	1,50	2.520	1.016,30
-	QPRD350R/2	3AC	2	1,50	2.160	1.221,00
-	QPRD350/2	3AC	2	2,20	3.960	1.377,60
-	QPRD400R/2	3AC	2	3	5.400	1.642,50
-	QPRD400/2	3AC	2	4	6.120	1.787,30
-	QPRD450R/2	3AC	2	5,50	7.920	2.241,20
-	QPRD450/2	3AC	2	7,50	7.920	2.555,70
-	QPRD500R/2	3AC	2	11	10.800	3.372,30
-	QPRD500R/4	3AC	4	1,10	4.680	1.778,10
-	QPRD500/2	3AC	2	15	10.800	4.003,80
-	QPRD500/4	3AC	4	1,50	5.400	1.877,30
-	QPRD560R/4	3AC	4	2,20	7.200	2.546,50
-	QPRD560/4	3AC	4	3	7.920	2.654,80
-	QPRD630R/4	3AC	4	4	10.080	3.275,80
-	QPRD630/4	3AC	4	5,50	10.800	3.539,30
-	QPRD710R/4	3AC	4	7,50	14.400	4.576,40
-	QPRD710/4	3AC	4	11	18.000	5.073,60
-	QPRD800R/4	3AC	4	15	21.600	6.191,50
-	QPRD800/4	3AC	4	18,50	25.200	6.755,10
-	QPRD900R/4	3AC	4	30	32.400	9.526,00
-	QPRD900/4	3AC	4	37	32.400	10.452,30



Centrifugal high pressure fans with backward curved impeller suitable to extract clean or slightly dusty air or for pneumatic transport of solid materials mixed with air, fumes, fine dust, in industrial buildings with air temperature between -10°C and +60°C, volute casing made from coated steel in orientable version, single inlet backward curved impeller made from welded and coated steel connected directly to the motor shaft supported by the pedestal (ES.4), asynchronous three-phase IE3 with PTC, IP55, class F motor.

- For bigger sizes, specific performances, special versions and other inquiries, contact the technical sales team of Aerauliqa

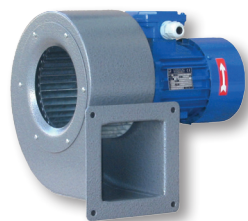


DATASHEET

Code	Description	Motor	Pole	kW	m³/h	Price €
-	QPRC400R/2	3AC	2	0,75	935	1.043,60
-	QPRC400/2	3AC	2	1,10	1.440	1.103,60
-	QPRC450R/2	3AC	2	1,50	1.620	1.291,60
-	QPRC450/2	3AC	2	2,20	2.160	1.448,00
-	QPRC500R/2	3AC	2	3	2.520	1.774,20
-	QPRC500/2	3AC	2	4	2.880	1.917,80
-	QPRC560R/2	3AC	2	4	3.240	2.076,90
-	QPRC560R/4	3AC	2	5,50	3.600	2.316,80
-	QPRC560/2	3AC	2	7,50	4.680	3.063,10
-	QPRC560/4	3AC	2	11	5.400	3.635,90
-	QPRC630R/2	3AC	2	15	7.200	5.188,30
-	QPRC630R/4	3AC	2	18,5	7.920	4.671,60

FORWARD CURVED CENTRIFUGAL

QUICK



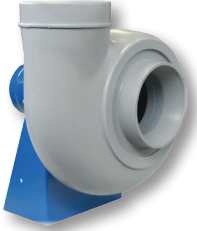
DATASHEET

Centrifugal medium pressure fans with forward curved impeller suitable to extract clean and slightly dusty air up to 2500m³/h in industrial buildings with air temperature up to +80°C, volute casing made from coated galvanised steel in bolted version (orientable also at site), supplied with LG270° orientation (other orientations available on request), single inlet steel sheet impeller with forward curved "Sirocco" type blades connected directly to the motor shaft flanged to one side of the fan (ES.5), asynchronous single or three-phase self-ventilated motor, B35, IP55, class F motor.

Code	Description	Motor	Pole	kW	m ³ /h	Price €
-	QUICK122-1AC	1AC	2	0,09	500	274,00
-	QUICK122-3AC	3AC	2	0,09	500	261,00
-	QUICK142-1AC	1AC	2	0,18	730	313,20
-	QUICK142-3AC	3AC	2	0,18	730	300,00
-	QUICK162-1AC	1AC	2	0,55	1.370	438,30
-	QUICK162-3AC	3AC	2	0,55	1.370	352,20
-	QUICK182-1AC	1AC	2	1,10	1.860	572,80
-	QUICK182-3AC	3AC	2	1,10	1.860	626,20
-	QUICK202-1AC	1AC	2	1,50	2.500	743,60
-	QUICK202-3AC	3AC	2	1,50	2.500	717,50

ANTIACID

QPX



DATASHEET

Centrifugal fans with backward curved impeller made from recyclable plastic suitable to transport fumes and corrosive vapours with high humidity level with airflow up to 12800m³/h in industrial buildings with air temperature between -15°C and +70°C, bolted orientable volute casing made from PE, single inlet backward curved impeller made from PP, asynchronous single or three-phase, IE3 with PTC, IP55, class F motor, motor support made from painted sheet steel and stainless steel screws (Aisi 304).

Code	Description	Motor	Pole	kW	m ³ /h	Price €
-	QPX202-1AC	1AC	2	0,18	1.100	801,00
-	QPX202-3AC	3AC	2	0,18	1.100	713,70
-	QPX252-1AC	1AC	2	0,37	2.100	1.021,40
-	QPX252-3AC	3AC	2	0,37	2.100	918,50
-	QPX254-1AC	1AC	4	0,12	1.075	1.005,80
-	QPX254-3AC	3AC	4	0,12	1.075	864,90
-	QPX282-1AC	1AC	2	0,75	3.100	1.326,80
-	QPX282-3AC	3AC	2	0,75	3.100	1.181,90
-	QPX284-1AC	1AC	4	0,18	1.600	1.208,00
-	QPX284-3AC	3AC	4	0,18	1.600	1.037,10
-	QPX312-3AC	3AC	2	1,50	4.300	1.428,60
-	QPX314-1AC	1AC	4	0,25	2.250	1.386,80
-	QPX314-3AC	3AC	4	0,25	2.250	1.189,80
-	QPX352-3AC	3AC	2	2,20	6.600	1.650,30
-	QPX354-1AC	1AC	4	0,37	3.400	1.623,00
-	QPX354-3AC	3AC	4	0,37	3.400	1.372,40
-	QPX404-1AC	1AC	4	0,55	4.750	1.969,90
-	QPX404-3AC	3AC	4	0,55	4.750	1.722,00
-	QPX452-3AC	3AC	2	4	6.600	4.225,50
-	QPX454-3AC	3AC	4	1,10	5.900	2.198,20
-	QPX504-3AC	3AC	4	1,50	6.100	5.832,70
-	QPX564-3AC	3AC	4	2,20	9.100	6.628,50
-	QPX634-3AC	3AC	4	4	12.800	7.753,10



Flexible connector

Flexible connector made from PVC to be fitted to inlet/outlet in order to prevent the transmission of vibrations from the fan to the rigid duct.

Code	Description	Price €
002644	FLEXIBLE CONNECTOR Ø160 QPX	46,90
002646	FLEXIBLE CONNECTOR Ø200 QPX	53,40
002647	FLEXIBLE CONNECTOR Ø225 QPX	57,50
002648	FLEXIBLE CONNECTOR Ø250 QPX	65,20
002672	FLEXIBLE CONNECTOR Ø280 QPX	69,10
002673	FLEXIBLE CONNECTOR Ø315 QPX	77,10
002674	FLEXIBLE CONNECTOR Ø355 QPX	88,70
002675	FLEXIBLE CONNECTOR Ø400 QPX	138,20
002676	FLEXIBLE CONNECTOR Ø450 QPX	160,40
002649	FLEXIBLE CONNECTOR Ø500 QPX	180,00



Gravity shutter

Gravity shutter made from PVC and PP to prevent leaks of air when fan is not operating.

Code	Description	Price €
002638	GRAVITY SHUTTER Ø160 QPX	190,40
002640	GRAVITY SHUTTER Ø200 QPX	237,40
002641	GRAVITY SHUTTER Ø225 QPX	275,20
002642	GRAVITY SHUTTER Ø250 QPX	305,30
002678	GRAVITY SHUTTER Ø280 QPX	328,80
002679	GRAVITY SHUTTER Ø315 QPX	347,00
002680	GRAVITY SHUTTER Ø355 QPX	384,80
002681	GRAVITY SHUTTER Ø400 QPX	408,40
002682	GRAVITY SHUTTER Ø450 QPX	678,40
002643	GRAVITY SHUTTER Ø500 QPX	743,60



Manual shutter

Manual shutter made from PVC and PP to adjust the airflow.

Code	Description	Price €
002632	MANUAL SHUTTER Ø160 QPX	180,00
002634	MANUAL SHUTTER Ø200 QPX	202,20
002635	MANUAL SHUTTER Ø225 QPX	214,00
002636	MANUAL SHUTTER Ø250 QPX	221,80
002684	MANUAL SHUTTER Ø280 QPX	233,50
002685	MANUAL SHUTTER Ø315 QPX	275,20
002686	MANUAL SHUTTER Ø355 QPX	279,20
002687	MANUAL SHUTTER Ø400 QPX	301,30
002688	MANUAL SHUTTER Ø450 QPX	1.577,30
002637	MANUAL SHUTTER Ø500 QPX	1.898,20

TERMS & CONDITIONS OF SALE

Terms & Conditions of Sale are available on www.aerauliqa.com or to be downloaded through dedicated QR Code.



Based on a Policy of continuous product development and improvement Aerauliqa S.r.l. reserves the right to modify prices, products and/or the relevant technical data of this price list in any moment, without notice. Images and descriptions are considered indicative.

Prices are VAT excluded.

Aerauliqa S.r.l. is not responsible for any printing error.

STAY CONNECTED WITH US!



Technical Info & News:

www.aerauliqa.com

✉ info@aerauliqa.it

☎ +39 030 674681

FOLLOW US ON OUR SOCIAL MEDIA



facebook



Instagram



LinkedIn



YouTube

www.aerauliqa.com



PRODUCTION PLANTS

Plant A:
Via Mario Calderara 39/41
25018 Montichiari (Brescia)
ITALY

Plant B:
Via Torquato Tasso 7
25016 Ghedi (Brescia)
ITALY

Plant C:
Via Cesare Pavese 6
25080 Mazzano (Brescia)
ITALY